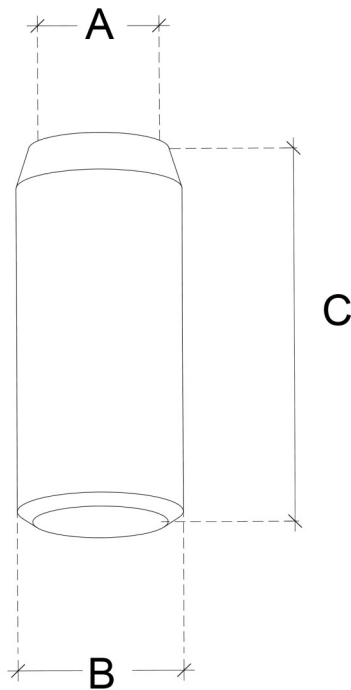


Part number	Cable Diameter	Length (mm)	B	C	D	A	Material
GCA 1	½" flexible or ½" low loss jumper or ½" feeder (13 or 16mm diameter) protecting 7/16 vertical connections <u>below</u> device ONLY	80	26	26	37	NIL	EPDM

- GCA1 is ONLY to be fitted over ½" feeder or jumper vertical 7/16 connections on the bottom of system components
- Use GCA4 on 4.3-10 connectors with ½ jumper/feeder and GCA5 on 7/8 Feeder with 4.3-10 connectors
- Where the device has a top exit connections use only GCA 2 and relevant bung – see separate install instructions



GCA 1 Installation advice:

- Pull the GCA1 down over the male connection nut with the coned end of the GCA1 facing upwards.
- It is tight, so be careful not to stress or bend the jumper when doing this. You can use a very small amount of silicone spray on the three internal ribs of GCA 1 (away from the connector) before pulling it over the male nut, but ensure the connector protection cap remains installed to reduce any chance of contamination. Never spray the connection/connector
- Complete connection, following usual torque guidance then push the GCA 1 right over the connection. Avoid twisting the GCA 1 anti-clockwise, which may affect your connection.

GCA1 is designed to be pushed up tight to the four hole flange plate on the female connector socket.