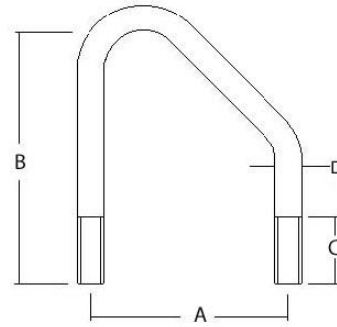


N-Bolts M12



- Mild steel grade 43A to BS4360
- Supplied with 4 full nuts, 2 flat washers & 2 spring washers
- Finish spun galvanised

- Cut threads
- Material grade 303 – Nuts & washers A2
- All dimensions in millimetres

Part Number	A	B	C	D	Angle Size	Weight Kg
NB006	75	110	50	12	60 x 60	0.301
NB/0065	80	100	35	12	65 x 65	0.289
NB007	85	105	35	12	70 x 70	0.304
NB/0075	90	110	35	12	75 x 75	0.312
NB008	95	120	40	12	80 x 80	0.340
NB018	105	140	50	12	90 x 90	0.366
NB010	115	145	40	12	100 x 100	0.384
NB019	130	165	50	12	4 ½" x 4 ½"	0.420
NB011	135	170	50	12	120 x 120	0.435
NB020	142	177	50	12	5" x 5"	0.458
NB012	165	200	50	12	150 x 150	0.491