

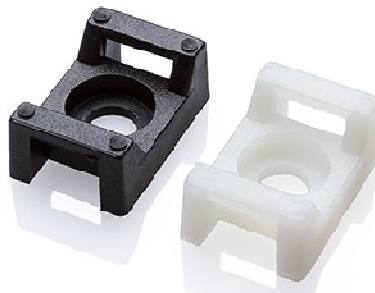
Cable Tie Bases



The adhesive backing used on our nylon cable tie bases has been tested in the most varied conditions and extreme temperatures. We can therefore confidently recommend their use on most smooth, dry, clean and grease free surfaces. Recommended temperature -20°C to +60°C, but it is advised that the bases should not be applied when temperatures are very low. To ensure complete security where excessive stress or vibration is likely to occur, a screw mounting hole is provided on the HFC 2/4. We offer tie bases with entry from four sides, which facilitates error-free mounting. The bases are available in either natural or black. Please specify when ordering.

Cable Ties Bases: 100 Piece Packs				
Part Number	Length (mm)	Width (mm)	Entry	Maximum Tie Width (mm)
HFC 1/4	20	20	4 Way	4.0
HFC 2/4	28	28	4 Way	5.0

Screw Mountable Saddle Type Mounts



- Material: Nylon 6.6
- Continuous working temperature: -40°C to +85°C

Screw Mountable Saddle Type Mounts: 100 Piece Packs		
Part Number	For Use With Cable Ties Up to mm Wide	Size of Screw
SM 2	4.8	M4
SM 3	9.0	M5