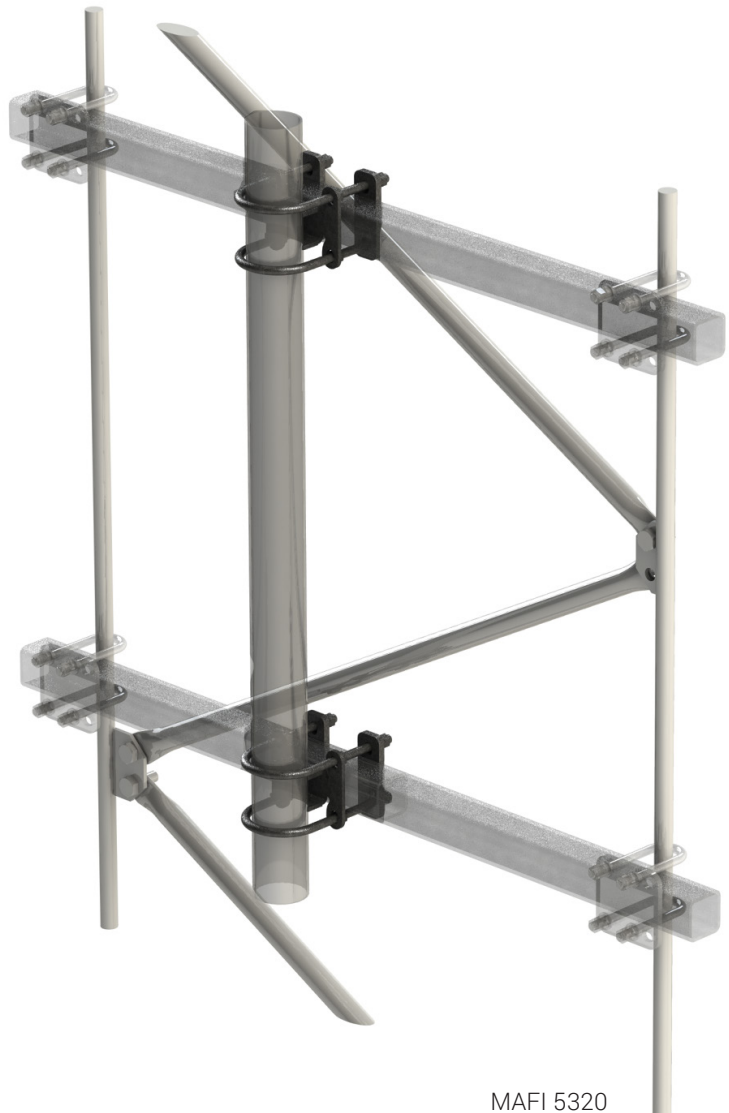


MAFI 5320*

Crossover Kit



MAFI 5320

Designed to provide perpendicular joints between circular members and square tubes.

Flexibility

MAFI 5320 fits circular tubes of \varnothing 76.1 mm and square beams ranging from 50 × 50 – 60 × 60 mm. MAFI 5321 fits circular tubes of \varnothing 114.3 mm and square beams ranging from 50 × 50 – 60 × 60 mm.

Detailed design data

For use when designing sites, detailed design data for this product can be found at www.mafi.se.

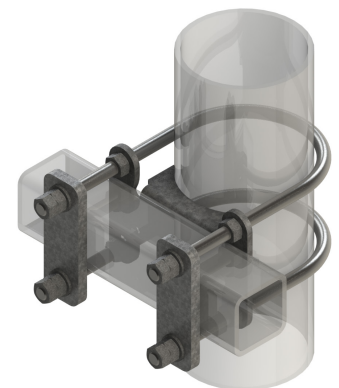
How to Order

To order this kit, please contact MAFI quoting article number:

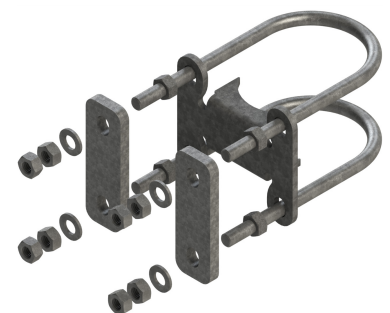
5320 or E-order number (SEG): **6000674**

5321 or E-order number (SEG): **6000675**

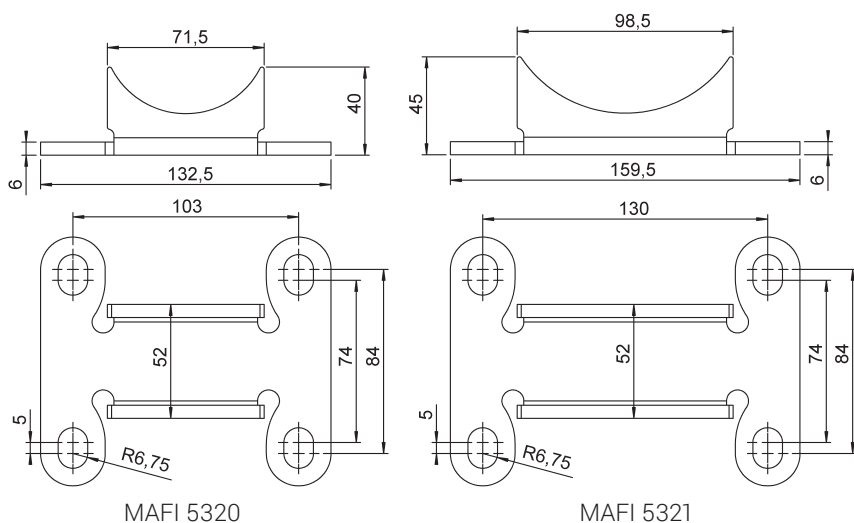
Contact information can be found at www.mafi.se.



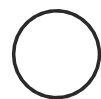
MAFI 5321



Content of kit



Circular tube



Art. 5320:
 Ø 76.1 mm
Art. 5321:
 Ø 114.3 mm

Square tube



50 × 50 – 60 × 60 mm

Tightening torque

U-bolt M12: 15 Nm

Part list

Parts	Material	Quantity
Bracket	S355MC FZV	1
Plates	S355MC FZV	2
U-bolts	8.8 FZV or A480	2
Nuts and washers	8.8 FZV	-

Package data

Product	Length (mm)	Width (mm)	Height (mm)	Weight (kg)
5320	220	140	50	2.4 kg
5321	250	150	50	2.7 kg

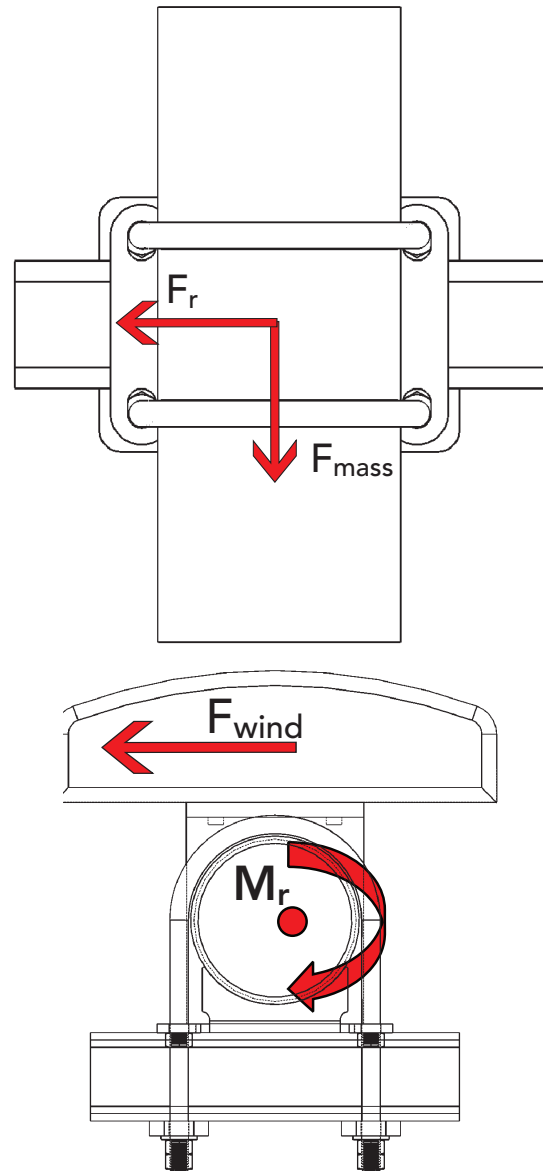
Product options

MAFI 5310, 5311, 5312: Joint plate kits for members Ø 25 – 60 mm, 50 × 50 – 60 × 60 mm.

Tubes of various lengths and diameter can be ordered from MAFI.



EN 1090



Design resistance data

The load limits given in this data sheet apply to the MAFI product only. The designer should always check that the supporting structure can safely carry the loads applied to it by the MAFI product.

Vertical load

Max Supported Equipment mass $F_{mass} = 100 \text{ kg}$

Lateral reaction force

Ultimate lateral reaction force $F_r = 3875 \text{ N}$

Rotational slip resistance

When high side forces can be expected, use the table below to check for rotational slip. Use ultimate loads to calculate the applied torque.

Ultimate torque capacity

Parent Pole \varnothing (mm)	Torque (Nm)
76.1	298
114.3	462