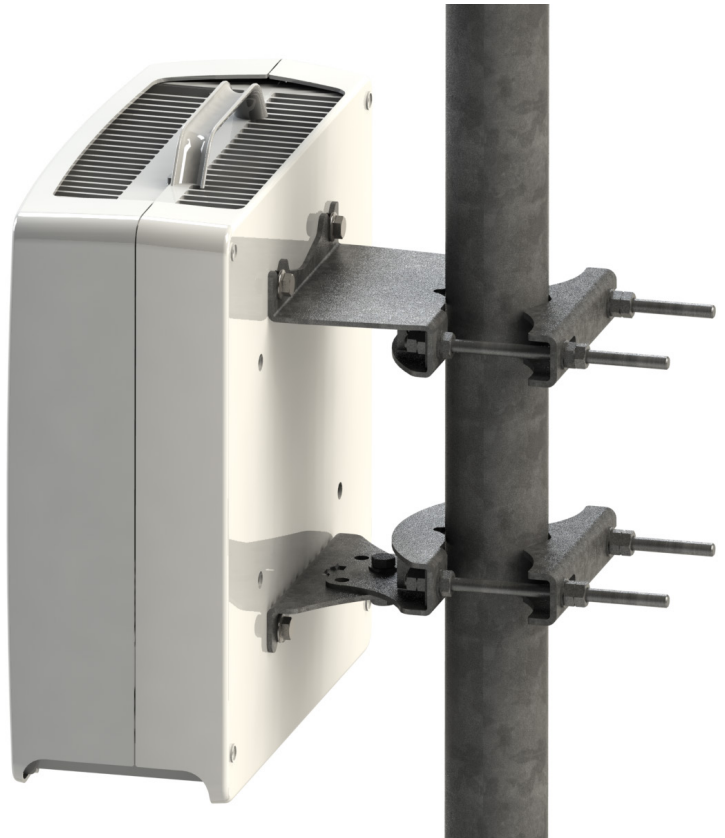


MAFI 4020

Single RRU-Mount



Designed to provide a secure mounting solution for a single Ericsson RRU with or without PSU. The Single RRU-mount can also be used in A2 configurations.

Flexibility

The mount will fit any round member from $\varnothing 25 - 114$ mm, or any equal-angle or square-section member from $35 \times 35 - 80 \times 80$ mm. It can also be used for wall mounting.

Detailed design data

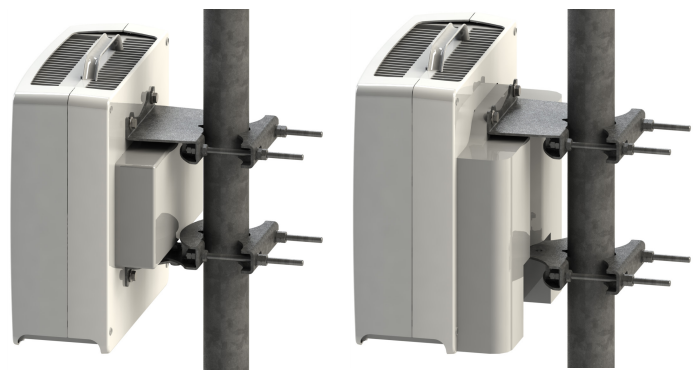
Detailed design data for this product can be found at www.mafi.se.

How to Order

To order this kit, please contact MAFI quoting article number:

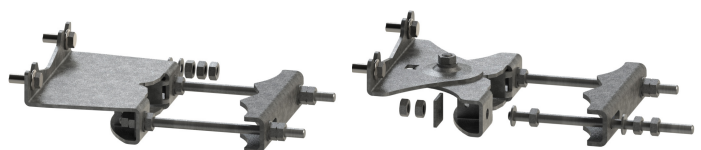
4020 or E-order number (SEG): **6000683**

Contact information can be found at www.mafi.se.

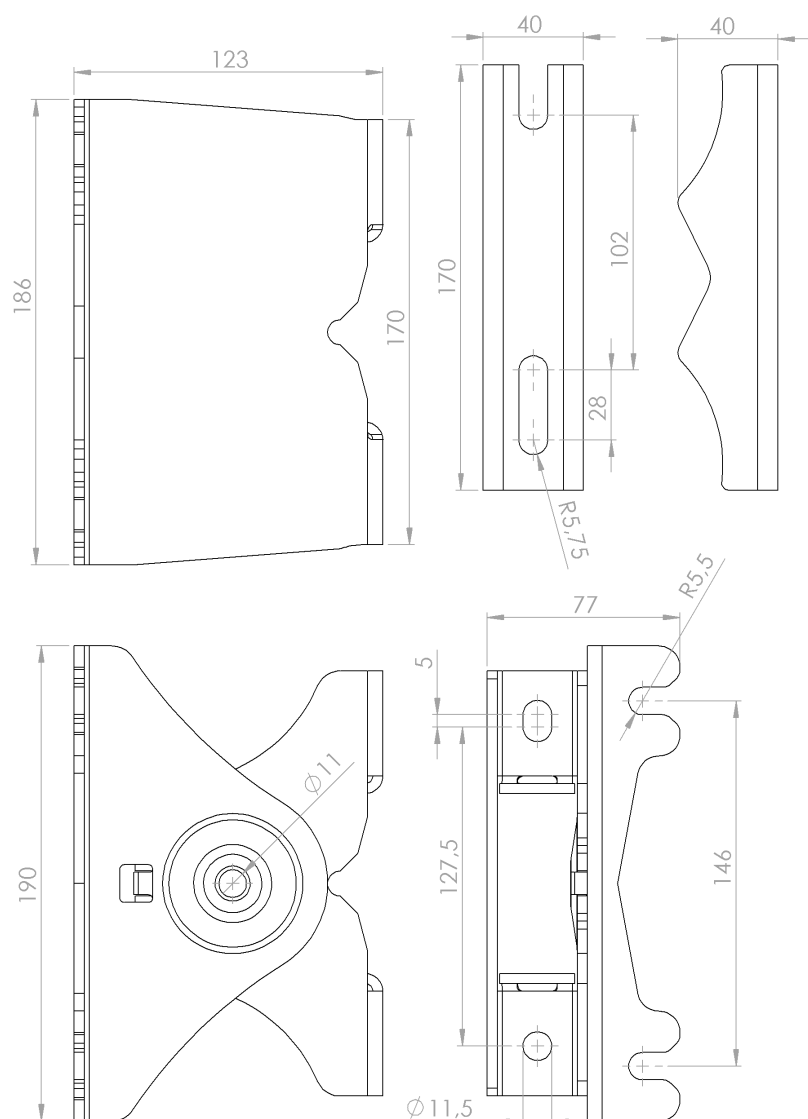


RRU with PSU

RRU with A2



Content of kit



Parent pole/leg



35 × 35 mm
up to 80 × 80 mm



Ø 25 – 114 mm



35 × 35 mm
up to 80 × 80 mm

Compatible RRU-Models

Ericsson RRU family and other units with horizontal c/c distance of 146 mm (5 ¾").

Tightening torque

Threaded rods M10: 18 Nm

Bolts M10: 41 Nm

Part list

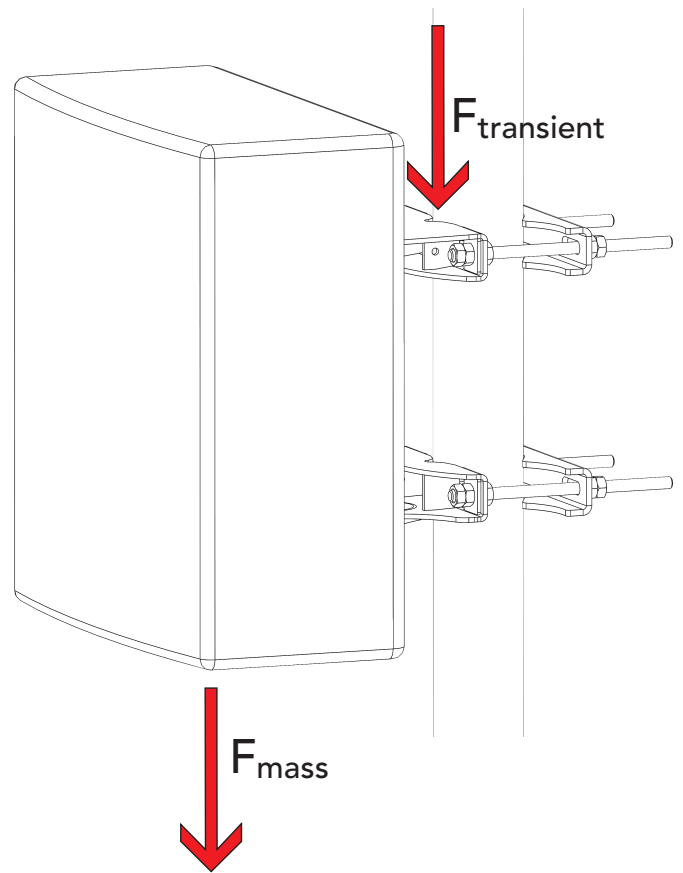
Parts	Material	Quantity
Clamps	S355MC FZV	2
Brackets	S355MC FZV	2
Threaded Rods M10	A4 or 8.8 FZV	4
Flange bolts M10	A4	4
Nuts M10	8.8 FZV	24
Washers	FZV	16

Package data

Length (mm)	Width (mm)	Height (mm)	Weight (kg)
230	210	85	4.3



EN 1090



Design resistance data

The load limits given in this data sheet apply to the MAFI product only. The designer should always check that the supporting structure can safely carry the loads applied to it by the MAFI product.

Load Resistance

Max equipment weight: 40 kg per equipment fitting instance ($F_{\text{mass}} \approx 390 \text{ N}$).

An ultimate transient man-load of 2400 N ($F_{\text{transient}}$) is also accepted.