

Graphicshow Cable Accessories (GCA) Ltd

Rigging Accessories Product Catalogue



Welcome

to our latest GCA Ltd Catalogue

We hope you will find our catalogue both informative and easy to use. We have included much more information within the tables to help you select the product you require. There are both new products and a wider selection of existing ranges included within this new catalogue. Many existing GCA Ltd products have undergone design changes which have improved their performance. GCA Ltd cable clamps and accessories are used all over the world and approved by the main telecom network operators O2, T-Mobile, Vodafone, Orange & 3. We are constantly adding to our range so please check our website at **www.gcaltd.co.uk** for our latest range.

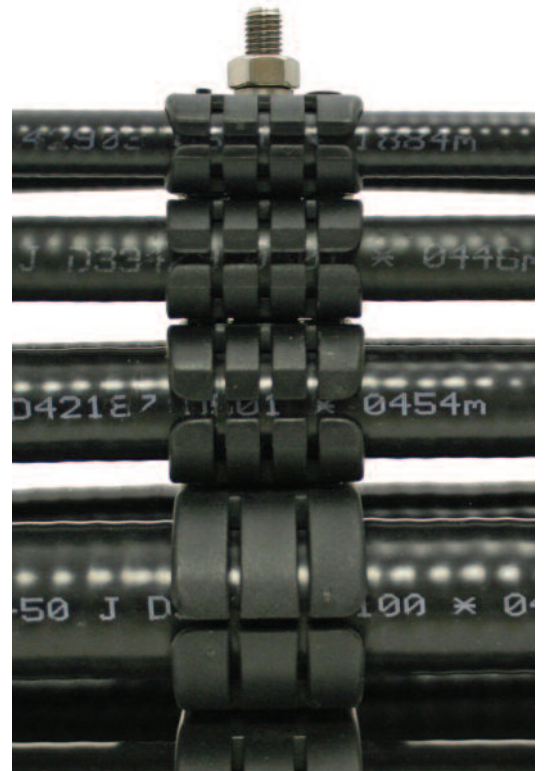
About Us

Founded in 1998, Graphicshow Cable Accessories (GCA) Ltd is now a unique 'One-Stop-Shop' for clamps, cleats and other cellular tower rigging accessories. GCA Ltd has built its strong reputation on choice, reliability and service.

GCA Ltd recognised the need to design items that were specifically required for the cellular and radio transmitting industry. To this end, it has developed probably the largest range of patented single and double clamps, cleats and inserts available in the UK.

Proud of its partnerships with the main UK telecommunications operators, GCA Ltd has developed further innovative products such as the registered design GCA 1, 2 & 3 weatherproof covers and outdoor 6 (3+3) way box and indoor plate. It is also proud to accept any challenge to design products to customer requirements.

GCA Ltd holds large stocks to provide a NEXT DAY delivery service to all its UK customers. Delivery is FREE for orders over £100.00, with any smaller orders incurring a £10.00 administration and delivery charge. GCA Ltd prides itself on its delivery promise and customer service and will continue to provide this in the future.



Index

Clamps & Cleats	2-9
Studding & Fasteners	10-13
Roxtec	14-17
Lightning Protection & Earthing	18-25
O2 Boxes, Plates & VET Accessories	26-28
Cable Marker Systems Ties & Tapes	29-32
Metal Rigging Accessories	33-36
Other Rigging Consumables	37-39
New Additions	40
Installation Guidelines for Clamps	41
Index	42-43
General Information	44

The policy of GCA Ltd is to manufacture to customer requirements and popular demand and therefore we are constantly adding new items to our range. As a consequence, this publication may not show our full up-to-date products, whereas our price list will give all the latest items held in stock. Should a customer require a product which could be added to our range, GCA Ltd, would be very interested to hear their proposal. Items listed in this publication are covered by Patent and Copyright Laws. GCA Ltd patent number - 2351117

Clamps & Cleats

Graphicclamps

Graphicclamps are available in single, double or 4 way clamps.

All clamps are designed to precisely fit the cable. A range of 11 cable diameters from 5mm to 58mm are available.

Clamps have an internal locating feature to eliminate twisting and damaging cable.

Clamps have an external interlocking feature (not just locating) when stacked 'Back to Back'. The design also allows clamps to fit to any flat surface.

Available in standard black colour and Vodafone 'Signal Grey', to RAL 7004. Flame retardant clamps are available to UL94 V-O (0.8mm) LSF halogen and Phosphorous free.



Graphicleats

The GCA Ltd range of cable cleats are designed for use with waveguide rubber inserts, and with secondary cables that are not air-spaced or foam-filled.

Additional material has been added between jaws of cleats to eliminate crushing the cable if over-tightening occurs.

A range of seventeen diameters from 0.3" (7.3mm) to 2-1/2" (63.50mm) are available.



Cable Clamp Cross-Reference Chart

Please see the below chart to help when ordering your clamps.

Single Clamp	Double Clamp	4 Way Clamp	Clamp Dia (mm)	Andrew Feeder type	RFS Feeder Type	Leoni Feeder Type	LS Cables Feeder Type	Other Cables
BW005.4mm	-	2P-4BW000 5.4mm	5.4	FSJ057-50, CNT195, CNT240	-	-	-	RG223 & RG588, Cat 5e UTP, ANY CABLES 5-6mm
BW007.5mm	2P-DW00- 7.5mm	-	7.5	HS1RP-50A, FSJ 1.50A, ETS1-50T, CNT 300	SCF 14-50	LC DUPLEX FIBRE OPTIC 84950504G	-	INTERCOND 48, VET CONTROL CABLES
BW008.5mm	2P-DW00- 8.5mm	-	8.5	LDF1-50, HST1-50	-	1/4" R (PE)	-	RG6, RET CONTROL CABLE, 2-CORE DC POWER CABLE, SINGLE CORE COPPER EARTH CABLE
BW0-11mm	2P-DW0- 11mm	2P-4BW0- 11mm	11	LDF2-50, FSJ 2.50, ETS2-50T, HS2RP-50, HST2-50, CNT400	LCF14-50, LCF38-50, SCF 38-50	-	HSFC 10D	RG213 & RG214- 50 ohm, RG8 & RG11- 75 ohm, LMR400, BELDEN 9913, SFX-500, AS1228, H1000, XRD1567
BW1-13mm	2P-DW1- 13mm	-	13	FSJ4.50B, HS4RP-50, HST4-50	HCA 38-50, SCF12-50	-	-	RG215 & RG217 - 50 ohm, XRD1568
BW2-1/2"	2P-DW2-1/2"	-	16 (1/2")	AVA4-50, LDF4-50, HLT4-50T, HJ4-50, HL4RP-50, CNT600	LCF12-50	1/2" R (PE)	HFC 12D, HFSC-FR 12D	LDF4.50 CABLE WITH MESSENGER WIRE, USE BW1.4-1/2" MESSENGER WIRE
BW4-5/8"	2P-DW4-5/8"	-	21 (5/8")	LDF4.50-50, HJ4-50-50	LCF58-50, HCA58-50	-	-	Reka XCMK-HF DC CABLE
BW5-7/8"	2P-DW5-7/8"	-	28 (7/8")	LDF5.50, AVA5-50, HJ5-50, VXL5-50	LCF78-50, HCA78-50, UCT78-50, JFN	7/8" R (PE)	HFC 22D, HFSC-FR 22D	RG220-50ohms, LDF5.50 - CABLE WITH MESSENGER WIRE USE - REF: BW2.0-7/8" MESSENGER WIRE
BW7-1 1/4"	2P-DW7-1 1/4"	-	40 (1-1/4")	AVA6-50, LDF6-50	LCF114-50, UCF114-50 *HCA118	1-1/4" R (PE)	HFC 33D	
BW8-1 5/8"	2P-DW8-1 5/8"	-	50 (1-5/8")	LDF7-50, AVA7-50, VXL 7-50	LCF158-50, HCA158-50	1-5/8" R (PE)	HFC 42D	CR50-1873, HF158-50
BW9-2 1/4"	-	-	57 (2-1/4")	HJ12-50, LDF12-50	LCF214-50, HCA214-50	-	-	-

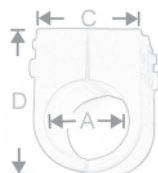
Bolt Hole Size: M10 or M8 **Material:** Polypropylene

* Use GCA Insert Ref: 2MMSLDW7

Cable clamp cross references are provided as a guideline and are subject to changes made by cable manufacturers. Please note that all clamps are designed to interlock when installed back to back, to maximise space on busy towers. All items in this publication are covered by copyright laws and GCA Ltd patent number 2351117.

Single Graphiclamp

All two piece single clamps are designed to precisely fit the cable diameter. A range of 11 cable diameters from 5mm to 58mm. All single clamps externally interlock with double and 4 way clamps. These GCA Ltd single clamps are manufactured in high grade polypropylene and UV stabilised to prevent degradation or breaking. For 'flame retardant' clamps to UL94V-0 (0.8mm) LSF Halogen and Phosphorous free material state 'BW5-7/8"FR'.



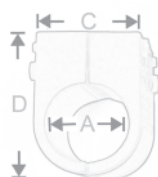
BW5-7/8"

Part Number	Cable Size	Colour	A	B	C	D	Weight	Pack Qty	Box Qty
BW0005.4mm	5.4mm	Black	5.4	22	32	44	0.01	50	1000
BW00-7.5mm	7.5mm	Black	7.5	25	32	44	0.02	50	800
BW00-8.5mm	8.5mm	Black	8.5	25	32	44	0.02	50	800
BW0-11mm	11mm	Black	11	26	33	44	0.02	50	800
BW1-13mm	13mm	Black	13	27	35	44	0.02	50	600
BW2-1/2"	16mm (1/2")	Black	16	27	40	44	0.02	50	600
BW4-5/8"	21mm (5/8")	Black	21	33	47	44	0.03	50	400
BW5-7/8"	28mm (7/8")	Black	28	42	50	44	0.04	25	300
BW7-1 1/4"	40mm (1-1/4")	Black	40	55	65	44	0.06	20	280
BW8-1 5/8"	50mm (1-5/8")	Black	50	65	75	44	0.08	20	200
BW9-2 1/4"	57mm (2-1/4")	Black	57	75	85	44	0.09	20	160

Bolt Hole Size: M10 or M8 **Material:** Polypropylene

Signal Grey Single Graphiclamp

Further to the standard range of black single clamps, GCA Ltd has also produced 'Signal Grey' coloured clamps to Vodafone specification RAL7004.



SGW5-7/8"

Part Number	Cable Size	Colour	A	B	C	D	Weight	Pack Qty	Box Qty
SGW0-11mm	11mm	Grey	11	26	33	44	0.02	50	800
SGW1-13mm	13mm	Grey	13	27	35	44	0.02	50	600
SGW2-1/2"	16mm (1/2")	Grey	16	27	40	44	0.02	50	600
SGW5-7/8"	28mm (7/8")	Grey	28	42	50	44	0.04	25	300
SGW7-1 1/4"	40mm (1-1/4")	Grey	40	55	65	44	0.06	20	280
SGW8-1 5/8"	50mm (1-5/8")	Grey	50	65	75	44	0.08	20	200

Bolt Hole Size: M10 or M8 **Material:** Polypropylene

Clamps General Information

N.B. Flexibility of clamps allows tolerance of plus 1mm minus 0.2mm on clamp sizes BW0005.4mm to BW4-5/8" & plus 1mm minus 0.5mm BW5-7/8" and above.

Double Graphiclamp

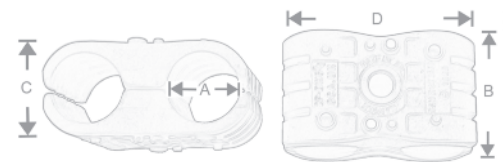
All two piece double clamps are designed to precisely fit the cable diameter. A range of 9 cable diameters from 7.5mm to 50mm. All double clamps externally interlock with single and 4 way clamps. These GCA Ltd double clamps are manufactured in high grade polypropylene and UV stabilised to prevent degradation or breaking. For 'flame retardant' clamps to UL94V-0 (0.8mm) LSF Halogen and Phosphorous free material state '2P-DW5-7/8"FR'.

Part Number	Cable Size	Colour	A	B	C	D	Weight	Pack Qty	Box Qty
2P-DW007.5mm	2 x 7.5mm	Black	7.5	44	24	60	0.02	25	600
2P-DW008.5mm	2 x 8.5mm	Black	8.5	44	24	60	0.02	25	600
2P-DW0-11mm	2 x 11mm	Black	11	44	24	60	0.03	25	600
2P-DW1-13mm	2 x 13mm	Black	13	44	27	70	0.04	25	500
2P-DW2-1/2"	2 x 1/2"	Black	16	44	27	74	0.04	20	500
2P-DW4-5/8"	2 x 5/8"	Black	21	44	33	76	0.05	20	400
2P-DW5-7/8"	2 x 7/8"	Black	28	44	42	83	0.05	20	320
2P-DW7-1 1/4"	2 x 1-1/4"	Black	40	44	60	114	0.10	10	140
2P-DW8-1 5/8"	2 x 1-5/8"	Black	50	44	70	136	0.14	10	100

Bolt Hole Size: M10 or M8 **Material:** Polypropylene



2P-DW5-7/8"



Signal Grey Double Graphiclamp

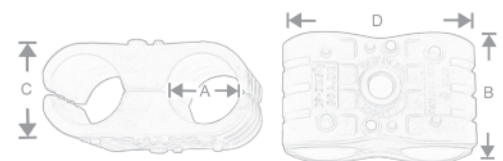
Further to the standard range of black double clamps, GCA Ltd has also produced 'Signal Grey' coloured clamps to Vodafone specification RAL7004.

Part Number	Cable Size	Colour	A	B	C	D	Weight	Pack Qty	Box Qty
2P-DSGW0-11mm	2 x 11mm	Grey	11	44	24	60	0.03	25	600
2P-DSGW1-13mm	2 x 13mm	Grey	13	44	27	70	0.04	25	500
2P-DSGW2-1/2"	2 x 1/2"	Grey	16	44	27	74	0.04	20	500
2P-DSGW5-7/8"	2 x 7/8"	Grey	28	44	42	83	0.05	20	320
2P-DSGW7-1 1/4"	2 x 1-1/4"	Grey	40	44	60	114	0.10	10	140
2P-DSGW8-1 5/8"	2 x 1-5/8"	Grey	50	44	70	136	0.14	10	100

Bolt Hole Size: M10 or M8 **Material:** Polypropylene



2P-DSGW5-7/8"



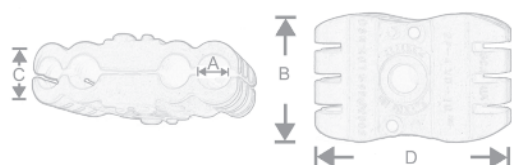
Clamps General Information

N.B. Flexibility of clamps allows tolerance of plus 1mm minus 0.2mm on clamp sizes 2P-DW007.5mm to 2P-DW4-5/8" & plus 1mm minus 0.5mm 2P-DW5-7/8" and above.

4 Way Clamps



2P-4BW0-10mm



Through popular demand GCA Ltd produced the 4 way clamps to reduce costs of purchasing 2 doubles, with longer studding etc. Both clamps will hold single or double cables adequately allowing additional cable to be easily added later. All two piece 4 way clamps are designed to precisely fit the cable diameter. A range of 2 diameters from 5.4mm to 10mm. All 4 way clamps externally interlock with single and double clamps.

Part Number	Cable Size	Colour	A	B	C	D	Weight	Pack Qty	Box Qty
2P-4BW0005.4mm	4 x 5.4mm	Black	5.4	44	21	60	0.03	25	700
2P-4BW0-10mm	4 x 10mm	Black	10	44	25	74	0.05	20	500

Bolt Hole Size: M10 or M8 **Material:** Polypropylene

N.B. Flexibility of clamps allows tolerance of plus 0.4mm minus 0.1mm on clamp size 2P-4BW0005.4mm & plus 0.5mm minus 0.2mm on 2P-4BW0-10mm.

Tower Leg or Pipe Adaptor



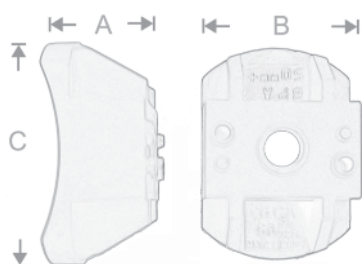
BPA50mm+



Used when tower legs or steel work must 'not' be drilled again after galvanising. Suitable for use with either single or double interlocking Graphicclamps. Can also be used on any flat surface such as angle iron etc. Leg or pipe attaching the adaptor should be less than 50mm for BPA25mm and greater than 50mm for BPA50mm+. Attachment by hose clips or by 1/2" - 3/4" stainless steel banding (see page 33).

Part Number	Colour	Pipe / Tower Leg Diameter	Nut Size	A	B	C	Weight	Pack Qty	Box Qty
BPA25mm	Black	Up to 45/50mm	M10	30	44	62	0.02	25	500
BPA50mm+	Black	Over 45/50mm	M10	30	44	62	0.03	25	500
BPA50+6	Black	Over 45/50mm	M6	30	44	62	0.03	25	500
SGPA50mm+	Grey	Over 45/50mm	M10	30	44	62	0.03	25	500
SGPA50+6	Grey	Over 45/50mm	M6	30	44	62	0.03	25	500

Bolt Hole Size: M10 or M6 **Material:** Polypropylene

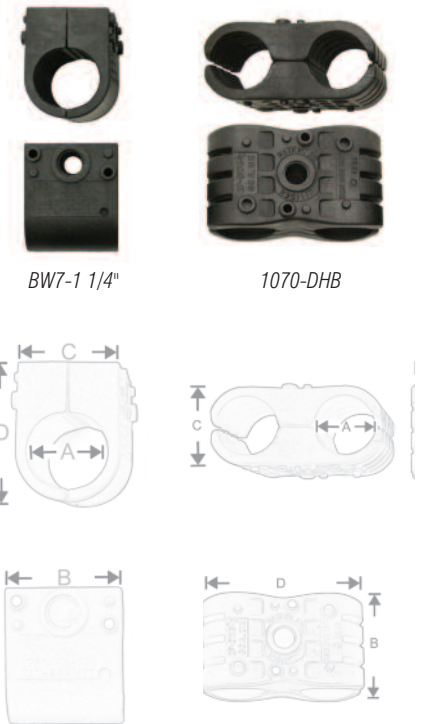


Clamps for Commscope Smooth Outer Sheath Cable

GCA Ltd adapted its double clamp range to suit commscope smooth outer sheath cable. Please see references below. All two piece double clamps are designed to precisely fit the cable diameter, and externally interlock with single and 4 way clamps. These GCA Ltd double clamps are manufactured in high grade polypropylene and UV stabilised to prevent degradation or breaking. For 'flame retardant' clamps to UL94V-0 (0.8mm) LSF Halogen and Phosphorous free material state '1070-DHB FR'.

Part Number	Cable Reference	Cable Size	Colour	A	B	C	D	Weight	Pack Qty	Box Qty
BW0-11mm	SFX500	1/2"	Black	11.4	44	26	33	0.02	50	800
BW7-1 1/4"	FLX 1480	1 1/4"	Black	39.8	44	55	65	0.06	20	280
BW8-1 5/8"	CR50 - 1873 PE & R	1 5/8"	Black	50.3	44	65	75	0.08	20	200
2P-DW0-11mm	SFX500	2 x 11mm	Black	11.4	44	60	60	0.03	25	650
540-DHB	CR50 - 540 PE & R, FXL540	2 x 1/2"	Black	15.5	44	74	74	0.04	20	500
1070-DHB	CR50 - 1070 PE & R, FXL1070	2 x 7/8"	Black	29.7	44	83	83	0.05	20	320
2P-DW7-1 1/4"	FLX 1480	2 x 1-1/4"	Black	39.8	44	114	114	0.1	10	140
2P-DW8-1 5/8"	CR50 - 1873 PE & R	2 x 1-5/8"	Black	50.3	44	136	136	0.14	10	100

Bolt Hole Size: M10 or M8 **Material:** Polypropylene



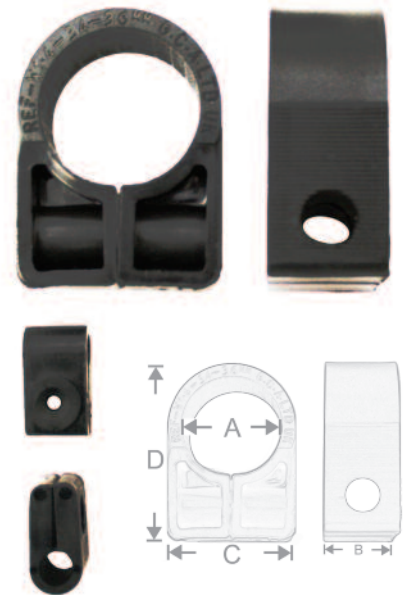
Single Graphicleats

Single graphicleats are made specifically with 10mm bolt holes for use in the cellular and radio transmitting industry. Additional material has been added between jaws of cleats to eliminate crushing the cable if over-tightening occurs. Cleat references BW0.5-6, BW0.8-6, BW0.9-6 & BW1.0-6 can only be used on coax or power cables. Single Graphicleats BW0.7, BW1.2, BW1.4, BW2.0, BW2.25, BW2.5 can all be used with rubber inserts. See page 8.

Part Number	Colour	A	B	C	D	Weight	Pack Qty	Box Qty
BW0.3-10	Black	7.3	18	13	32	0.005	100	4000
BW0.35-10	Black	8.1	18	13	32	0.005	100	4000
BW0.4-10	Black	9.5	18	15	32	0.005	100	4000
BW0.5-10	Black	11.5	18	15	37	0.005	100	3000
BW0.5-6	Black	12.7	18	18	37	0.005	100	3000
BW0.6-10	Black	14	18	18	38	0.005	100	2400
BW0.6-6	Black	14	18	18	38	0.005	100	2400
BW0.7-10	Black	16.5	18	22	39	0.007	100	3000
BW0.8-6	Black	20.3	18	22	38	0.007	100	3000
BW0.9-6	Black	22.8	26	38	42	0.009	50	400
BW1.0-6	Black	25.4	26	38	46	0.01	50	400
BW1.2-10	Black	28	26	38	55	0.03	50	400
BW1.4-10	Black	34	26	44	61	0.05	50	400
BW1.6-10	Black	39	26	48	65	0.05	50	350
BW2.0-10	Black	49	26	58	75	0.04	25	300
BW2.25-10	Black	56	26	64	81	0.04	25	300
BW2.5-10	Black	60	31	70	87	0.05	20	200

Material: Low Density Polythene

BW1.4



BW0.3

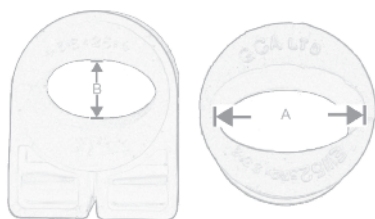
N.B Flexibility of cleats allows tolerances of plus 1mm minus 0.5mm on cleat sizes.

Waveguide Cleats

Waveguide cleats with rubber inserts allow some discrepancy in overall cable size whilst still adequately clamping the normally hollow waveguide, without any damage. The design of the cleat allows the jaws to come together but stops the cable from being overtightened therefore eliminating the need for a spacer. The rubber inserts are certified to BS3227 with 50 shore hardness. Our inserts have ridges top and bottom to guarantee the insert is fully and correctly held in the cleat, and therefore quicker and easier to install.



BW1.4-EW132



Part Number	Cleat Size	Waveguide Reference	Approximate Dimensions	Waveguide Operating Freq. GHz	Pack Qty	Box Qty
BW1.2-EW240	1.2"	EW240 E250	15.2 x 9.65mm (0.6" x 0.38") 16.0 x 11.0mm (0.62" x 0.43")	24.0 – 26.5 24.25 – 26.5	25	400
BW1.2-E380	1.2"	E380	12.0 x 9.0mm (0.47" x 0.35")	37 – 39.5	25	400
BW1.2-EW210/38	1.2"	EW210 & E038	18.0 x 13.0mm (0.71" x 0.51")	37 – 39.5	25	400
BW1.2-E185	1.2"	E185 & EP185	21.0 x 13.0mm (0.83"x0.51")	13.7-19.7	25	400
BW1.2-EW180	1.2"	EW180 & EWP180	20.1 x 12.4mm (0.79" x 0.49")	17.3 – 19.70	25	300
BW1.4-EW127	1.4"	EW127 & EWP127 E130 & EP130	28.2 x 17.1mm (1.11" x 0.67") 29.0 x 18.0mm (1.14"x0.71")	10 – 13.2 10.7 – 13.25	25	300
BW1.4-EW132	1.4"	EW132 & EWP132	24.4 x 15.5mm (0.96" x 0.61")	11.0 – 15.35	25	300
BW1.4-E150	1.4"	E150 & EP150	26 x 16mm (1.0" x 0.6")	13.4 – 15.35	25	300
BW1.4-EW220	1.4"	EW220 E220	17.8 x 11.2mm (0.70" x 0.44") 18.0 x 12.0mm (0.71 x 0.47")	21.2 – 23.6 21.2 – 23.6	25	300
BW2.0-EW77	2.0"	EW77 & EWP77 E78 & EP78	43.6 x 25.4mm (1.72" x 1.0") 44.26 x 28.0mm (1.73" x 1.02")	6.1 – 8.5 7.1 – 8.5	20	200
BW2.0-E75/15	2.0"	EW75 & EO15	41.0 x 27.0mm (1.61" x 1.06")	12.7 – 15.35	20	200
BW2.0-EW90	2.0"	EW90 & EWP90 E105	33.5 x 20.3mm (1.32" x 0.8") 33.0 x 20.0mm (1.3" x 0.79")	10.2 – 11.7 10.0 – 11.7	20	200
BW2.25-EW63	2.25"	EW63 & EWP63 EW64 & EWP64 E65 & EP65	51.1 x 29.5mm (2.01" x 1.16") 48.5 x 28.4mm (1.91" x 1.12") 51.0 x 30.0mm (2.0" x 1.18")	5.10 – 7.13 5.3 – 7.75 5.9 – 7.125	20	160
DW8 – EP70	2 x 1-5/8"	2 x EP70	48.0 x 28.0mm (1.9 x 1.1")	6.4 – 7.75	10	100
BW2.5 – EW52	2.5"	EW52 EP58	57 x 33mm (2.24" x 1.3") 57.2 x 33.3mm (2.25" x 1.31")	5.6 – 6.4 4.4 – 6.2	20	120

Material: Low Density Polythene with Rubber Inserts **Colour:** Black

Cleats with Rubber Inserts

Cleats with rubber inserts have been designed for general telecoms cables as well as waveguides.



BW1.4-6 HOLE

Part Number	Cleat Size	Hole Dia	Waveguide or Cable Reference	Pack Qty	Box Qty
BW0.7-4 HOLE	0.7"	4 x 5.5	RG223 & RG58-50 ohms BELDEN 9275 & 1505	100	2000
BW1.2-8HOLE	1.2"	8 x 5.5	RG223 & RG58-50 ohms BELDEN 9275 & 1505	25	400
BW1.2-3 HOLE10	1.2"	2 x 6.2 1 x 10.6	2 – 6.2mm DIA. HOLE 1 x 10.6mm APPROX FOR BELDEN 9913 - H1000 - RG11 - 75 ohms	25	400
BW1.2-3 HOLE6.2	1.2"	3 x 6.2	3 x 6.2mm DIA HOLES FOR BROADBAND CABLES	25	400
BW1.4-4HOLE	1.4"	4 x 10	BELDEN 9913 CABLE (10.0mm Dia.) & RG11 - 75 ohm	25	300
BW1.4-6 HOLE	1.4"	6 x 8.5	SUPERTUFF D.C. 2 CORE CABLE (8.5mm Dia)	25	300
BW1.4-RT15/10	1.4"	1 x 15/10	WR28 / WG22 / R320	25	300
BW1.4-RT18/11	1.4"	1 x 18/11	WR42 / WG20 / R220	25	300
BW1.4-RT25/15	1.4"	1 x 25/15	WR62 / WG18 / R140	25	300
BW1.4-1/2" Messenger Wire	1.4"	N/A	LDF4.50 & MESSENGER WIRE LCF 1/2" & MESSENGER WIRE	25	300
BW2.0-7/8" Messenger Wire + 8.5mm Hole	2.0"	N/A	LDF5.50 & MESSENGER WIRE, LCF 7/8" & MESSENGER WIRE	20	200

Material: Low Density Polythene with Rubber Inserts **Colour:** Black

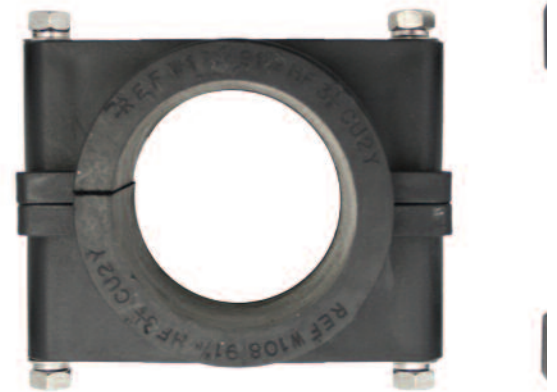
Two Bolt Clamps with Rubber Inserts

The two bolt fixing clamp was designed for use with larger cables. There are six different sizes of rubber insert to suit the cable being used. The two bolt fixing clamp has identical halves and unlike GCA Ltd standard feeder clamps, uses two bolts to attach to cable tray etc, which gives extra strength. (M10 studding sold separately - recommended stud length M10x180mm).

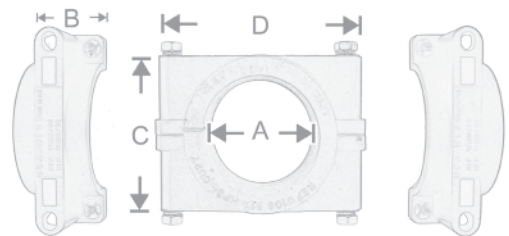
Part Number	Colour	Cable Reference	A	B	C	D	Weight	Pack Qty
BW108/72	Black	HCA295 - 50 ohms	107 (72)	63	128	170	0.82	10
BW108/76	Black	HCA300 - 50 ohms	108 (76)	63	128	170	0.82	10
BW108/91	Black	HCA318 - 50 ohms	108 (91)	63	128	170	0.50	10
BW108/100	Black	Any circular airspaced cable of approx 100mm dia	108 (100)	63	128	170	0.59	10
BW108/EW37	Black	EW37 Waveguide	73.7mm x 47.2mm	63	128	170	0.59	10
BW108/EP38	Black	EP38 Waveguide	84mm x 48mm	63	128	170	0.59	10

Bolt Hole Size: M10 **Material:** Black Polypropylene

N.B To connect to a single hole fitting a hot dipped galvanised bracket can be supplied - bolt hole size 10 or 12mm. Bolts and brackets need to be ordered separately.



BW108/91



Two Bolt Clamps

These two bolt clamps are for use on large cables but do not have rubber inserts. When used on cellular or airspaced cables, it is important that they are NOT overtightened. Once tightened, it is possible to keep 'over-tightening' as the jaws of these clamps are designed to for a wide range of cable sizes.

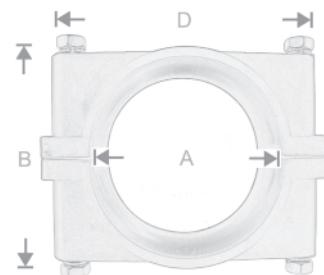
Part Number	Colour	A	B	C	D	Weight	Pack Qty
2F-51-57	Black	51-57	54	76	103	0.09	25
2F-58-64	Black	58-64	54	82	103	0.10	25
2F-65-70	Black	65-70	54	89	130	0.12	15
2F-71-76	Black	71-76	54	95	130	0.13	15
2F-77-83	Black	77-83	54	100	130	0.15	10
2F-84-90	Black	84-90	54	108	130	0.15	10
2F-91-97	Black	91-97	54	115	150	0.15	10
2F-98-105	Black	98-105	54	122	150	0.15	10
2F-106-112	Black	106-112	54	130	161	0.15	10
2F-113-120	Black	113-120	54	138	169	0.15	10
2F-121-128	Black	121-128	54	148	177	0.15	10
2F-129-135	Black	129-135	54	158	185	0.15	10

Material: Black Polypropylene

N.B To connect to a single hole fitting a hot dipped galvanised bracket can be supplied - bolt hole size 10 or 12mm. Bolts and brackets need to be ordered separately.



2F-91-97



Stainless Steel All Threads - A2 Din 976/B to BS3643 PT2

Most accessories in stock at GCA Ltd are for the cellular industry and are stainless steel A2 material specification. Studding (all threads) are cut to length and chamfered at both ends to eliminate injury during installation, and to guarantee nuts screw on. *Bagged Studding Kits - M10 bagged studding kits are available in packs of 10. Bagged kits compose of 10 studs, 30 nuts, 40 Flat washers & 20 spring coil washers. *Fixed Studding Kits - M10 fixed studding kits are available in packs of 10. Fixed kits come with pre-assembled studs complete with 3 nuts, 4 flat washers and 2 spring coil washers. GCA Ltd also hold a small range of A2 M6 & M12 studding and A4 M10 studding. Please call for prices.



M10x100

Part Number	Weight Per 100	Length mm	Pack Qty
M10x80	4.1	80	100
M10x85	4.3	85	100
M10x100	5.0	100	100
M10x110	5.6	110	100
M10x130	6.6	130	100
M10x150	7.5	150	100
M10x170	8.6	170	100
M10x180	9.0	180	100
M10x200	10	200	100
M10x220	11	220	100
M10x250	12.6	250	100
M10x280	14	280	100
M10x300	15.2	300	100
M10x500	40	500	10
M10x1m	80	1000	1

Part Number	Weight Per 100	Length mm	Pack Qty
M8x30	0.95	30	100
M8x50	1.6	50	100
M8x80	2.1	80	100
M8x100	2.9	100	100
M8x110	3.2	110	100
M8x120	3.9	120	100
M8x150	4.8	150	100
M8x200	6.3	200	100
M8x300	10.7	300	100

See installation guidelines Page 41, information on studding lengths required for stacking clamps.

Material: A2 Stainless Steel - BS 304

Stainless Steel Set Screws

Hexagonal head set screws - A2 Din 976/934.



M10x50SS

Part Number	Weight Per 100	Length mm	Pack Qty
M10x30SS	2.7	30	100
M10x40SS	3.2	40	100
M10x50SS	3.8	50	100
M10x60SS	4.5	60	100
M10x70SS	4.8	70	100
M10x80SS	5.2	80	100
M10x90SS	5.8	90	100
M10x100SS	6.2	100	100
M10x110SS	6.6	110	100
M10x130SS	8.0	130	100
M10x150SS	8.8	150	100

Part Number	Weight Per 100	Length mm	Pack Qty
M8x12SS	1.7	12	100
M8x16SS	1.8	16	100
M8x30SS	2.2	30	100
M8x40SS	3	40	100
M8x50SS	3.6	50	100
M8x100SS	5.8	100	100
M8x120SS	7.6	120	100
M8x150SS	7.6	150	100
M6x16SS	1.7	16	100
M6x20SS	2	20	100

Material: A2 Stainless Steel - BS 304

Hexagonal Full Nuts - A2 Din 934

M10 A2 Din 976/934 stainless steel hexagonal full nuts are stocked for use with M10 studding (all threads) and M10 set screws. From this range of M10 nuts, GCA Ltd now holds a wide range of nuts in various sizes and materials.

Part Number	Description	Size mm	Weight per 100 (kg)	Pack Qty
M12NUTS	Stainless Steel A2 Nuts	12	1.5	100
M10NUTS	Stainless Steel A2 Nuts	10	1	100
M8NUTS	Stainless Steel A2 Nuts	8	0.7	100
M6NUTS	Stainless Steel A2 Nuts	6	0.5	100
A4-M10NUTS	Stainless Steel A4 Nuts	10	1	100
M12GALVNUTS	Hex Full Nuts Galvanised	12	1.8	100
M10NYLOC	Nyloc Stainless Steel A2	10	0.9	100

Material: A2 Stainless Steel, A4 Stainless Steel, Galvanised Steel



M10NUTS



M12GALVNUTS



M10NYLOC

Washers - Flat, Penny & Serrated

A2 Din 976/934

Part Number	Material	Size mm	Weight per 100 (kg)	Pack Qty
M12FLATS	Stainless Steel A2	12	0.3	100
M10FLATS	Stainless Steel A2	10	0.2	100
M8FLATS	Stainless Steel A2	8	0.2	100
M6FLATS	Stainless Steel A2	6	0.1	100
A4-M10FLATS	Stainless Steel A4	10	0.2	100
M12GALVFLATS	Galvanised Steel	12	0.3	100
M10PENNY	Stainless Steel A2	10	0.2	100
M8PENNY	Stainless Steel A2	8	0.2	100
M6PENNY	Stainless Steel A2	6	0.1	100
M10SERRATED	(Internal) S/S A2	10	0.2	100

Material: A2 Stainless Steel, A4 Stainless Steel, Galvanised Steel



M10FLATS



M10PENNY



M10SERRATED



M12GALVFLATS

Square Section Spring Washers

A2 Din 976/934.

M10SCWASHERS



M12GALVSCWASHERS

Part Number	Description	Weight per 100 (kg)	Pack Qty
M12SCWASHERS	Stainless Steel A2	0.3	100
M10SCWASHERS	Stainless Steel A2	0.2	100
M8SCWASHERS	Stainless Steel A2	0.2	100
M6SCWASHERS	Stainless Steel A2	0.1	100
A4-M10SCWASHERS	Stainless Steel A4	0.2	100
M12GALVSCOIL	Galvanised Steel	0.3	100

Material: A2 Stainless Steel, A4 Stainless Steel, Galvanised Steel

M6 Cage Nut Kits

Cage nuts are suitable for use with all the common ranges of wall cabinets, floor standing data cabinets and server cabinets used in the telecoms industry.



M6CAGENUT

Part Number	Description	Weight per 100 (kg)	Pack Qty
M6CAGENUTKIT	100 x M6 Cage Nut, 100 x 6mm Cage bolts (screws) & 100 x Plastic Cup Washers	1.1	100
M6CAGESCREW	M6x16mm Cage Screw 'Panpozi' BZP	0.4	100
M6CAGESCREWFLAT	M6x16mm Cage Screw 'Flat Head' BZP	0.4	100
M6-2CAGE	Cage Nut BZP	0.4	
M6CUPWASHER	Black plastic cup washers for cage screw	0.2	100
M6SERRATED	Serrated Flanged Nut BZP	0.4	100

Material: Bright Zinc Plated Steel & Black Plastic

MKD 15/21 Clamps (CTL Beam Clamp)

GCA Ltd range of beam clamps (CTLs) offer a very high quality solution for clamping to flat metal surfaces and angle iron in outdoor applications.

Part Number	Bolt Size (mm)	Locknut	Weight	Pack Qty	Box Qty
M10MKD	10	Yes	0.188	10	100
M8MKD	8	No	0.187	10	100

Material: Body - Galvanised Steel

Screw: Stainless Steel



M8MKD

M10MKD

M10 Welded Stud

The GCA Ltd welded stud consists of a stainless steel plate with oblong fixing holes either side. It was designed mainly for earthing to flat plates and can be bent to fit around tower legs with the use of stainless steel banding.

Part Number	A	B	Weight	Weight Per 100	Pack Qty
M10x100WSTUD	80	35	100	7.2	100

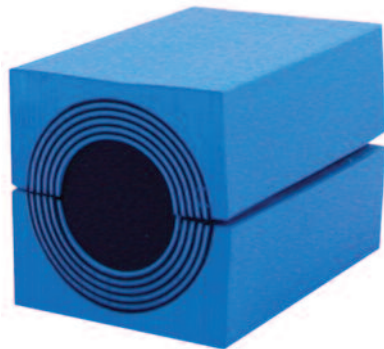
Material: Stainless Steel



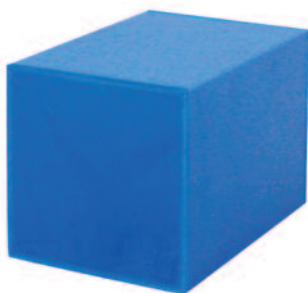
M10x100WSTUD

Roxtec RM Modules

Sealing modules for use with Roxtec frames. Provides multidiameter™ technology with removable layers for perfect adaption to cable or a pipe. When used with a solid core, the module functions as a spare module for future capacity. These can be purchased individually.



RM40



RM40/0

Part Number	Number of Cables / Pipes	For Cable / Pipe Diameter	Ext Dim (mm)	Box Qty
RM15	1	0+ 3.0-11.0	15x15	64
RM15w40	3	0+ 3.5-10.5	15x40	18
RM20	1	0+ 4.0-14.5	20x20	36
RM20w40	2	0+ 3.5-16.5	20x40	18
RM30	1	0+ 10.0-25.0	30x30	16
RM40	1	0+ 21.5-34.5	40x40	9
RM40 10-32	1	0+ 9.5-32.5	40x40	9
RM60	1	0+ 28.0-54.0	60x60	4
RM90	1	0+ 48.0-71.0	90x90	1
RM120	1	0+ 67.5-99.0	120x120	1
RM 5/0x24	n/a	n/a	5x20	24
RM 10/0x12	n/a	n/a	10x120	12
RM 15/0	n/a	n/a	15x15	64
RM 20/0	n/a	n/a	20x20	36
RM 30/0	n/a	n/a	30x30	16
RM 40/0	n/a	n/a	40x40	9
RM 60/0	n/a	n/a	60x60	4

Wedge Kit / Parts

The Roxtec Wedge is used in frames with rectangular packing space without built-in compression. Compresses and seals the installation of cables, pipes, modules and stayplates. *Wedge Kit Galv includes: one Roxtec Wedge 120, five stayplates, one wedge clip, one lubricant and installation instructions.



Wedge Kit

Part Number	Steel Type	Ext Dim (mm)	Weight	Box Qty
Wedge 60	Galvanised	60	0.4	1
Wedge 120	Galvanised	120	0.8	1
Wedge Kit*	Galvanised	120	1.5	1
Stayplate 120	Galvanised	120	0.1	1
Stayplate 60	Galvanised	60	0.06	1
Stayplate 120 AISI 316	Stainless Steel	120	0.1	1
Stayplate 60 AISI 316	Stainless Steel	120	0.06	1
Lubricant	n/a	25ml	0.01	1
Assembly Gel	n/a	30ml	0.02	1

GCA Ltd are an official distributor for Roxtec UK Ltd and currently supply the full range. Please contact head office for any items you require that are not listed in this catalogue.

Roxtec G Frame, galvanised, mild steel

The Roxtec G frame is a flanged metal frame available as single openings, or in combinations with several openings in width/ or height. *All the below products are available as primed mild steel - Ordering reference 'G6x1 primed'.

Part Number	Number of Opening	Packing Space (mm)	External Dimensions (mm)	Weight
G 2x1	1	60 x 120	221 x 241	3.4
G 4x1	1	120 x 120	280 x 241	4.1
G 4x2	2	120 x 120	292 x 383	6.3
G 6x1*	1	180 x 120	338 x 241	4.8
G 6x2	2	180 x 120	350 x 383	7.3
G 8x1	1	240 x 120	398 x 241	5.5
G 8x2	2	240 x 120	410 x 383	5.3

Material: Galvanised Steel



G 6x1

Roxtec R Frames

The Roxtec R Frame is a round expansion frame with a square packing space for cables, pipes and modules. Compression is integrated in the frame. Allows installation around existing cables and pipes. *All the below products are available in stainless steel with acid proof stainless steel fittings - Ordering reference 'R150 AISI 316'.

Part Number	Packing Space (mm)	External Dimensions (mm)	Weight
R 100 galv	60 x 60	100 x 85	0.7
R 125 galv	80 x 80	125 x 70	1.1
R 127 galv	80 x 80	127 x 70	1.1
R 150 galv*	90 x 90	150 x 70	1.6
R 200 galv	120 x 120	200 x 70	2.6

All the above items have galvanised fittings

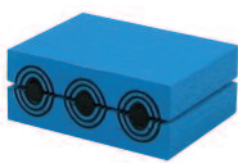


R 150 galv

GCA Ltd are an official distributor for Roxtec UK Ltd and currently supply the full range. Please contact head office for any items you require that are not listed in this catalogue.

Roxtec CM Modules

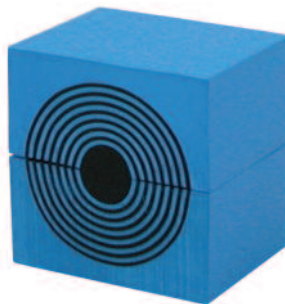
Sealing modules for use with Roxtec frames. Provides multidiameter™ technology with removable layers for perfect adaption to cable or a pipe. When used with a solid core, the module functions as a spare module for future capacity.



CM 15w40



CM 20w40



CM 40 10-32

Part Number	Number of Cables / Pipes	For Cable / Pipe Diameter	Ext Dim (mm)	Box Qty
CM 15w40	3	0+ 3.5-10.5	15x40	48
CM 20w40	2	0+ 3.5-16.5	20x40	36
CM 30	1	0+ 10.0-25.0	30x30	32
CM 30w40	1	0+ 10.0-25.0	30x40	24
CM 40 10-32	1	0+ 9.5-32.5	40x40	18
CM 5w40/0	n/a	n/a	5x40	72
CM 10w40/0	n/a	n/a	10x40	36

Roxtec CF frames

The Roxtec CF 8 entry seal is made from cast aluminium. Compression unit is integrated in the frame. Adaptor plates available for standardised openings in cabinets. The Roxtec CF 16 is a low profile metal entry seal frame. Compression is integrated in the frame.



CF8



CF16

Part Number	Material	No. of frame openings / Cables	Packing space (mm)	External Dim (mm)
CF8	Aluminium	1	140x75	231 x 93
CF8/5	Aluminium	5	140x75	232 x 93
CF8/8	Aluminium	8	140x75	233 x 93
CF8/9	Aluminium	9	140x75	234 x 93
CF 16	Primed Steel	1	160 x 40	234 x 93
CF 16 O	Primed Steel	1	160 x 40	234 x 93
CF 16 AISI 304*	Stainless Steel	1	160 x 40	234 x 93
CF 16/4	Primed Steel	4	160 x 40	234 x 93
CF 16/10	Primed Steel	10	160 x 40	234 x 93
CF 16/16	Primed Steel	16	160 x 40	234 x 93
CF 16/19	Primed Steel	19	160 x 40	234 x 93

GCA Ltd are an official distributor for Roxtec UK Ltd and currently supply the full range. Please contact head office for any items you require that are not listed in this catalogue.

Roxtec S Frame

Roxtec S Frame is a metal frame available as single openings, or in combinations with several openings in width and/or height. All of the below S Frames are also available in aluminium or stainless steel. Order reference e.g. S6x1 ALU or S6x1 AISI 316

Part Number	Number of Frame Openings	Packing Space (mm)	External Dim (mm)	Weight
S 2x1	1	60 x 120	121 x 141	2.2
S 2x2	2	60 x 120	121 x 271	3.9
S 4x1	1	120 x 120	180 x 141	2.8
S 4x2	2	120 x 120	180 x 271	4.7
S 6x1	1	180 x 120	238 x 141	3.3
S 6x2	2	180 x 120	238 x 271	5.5
S 8x1	1	240 x 120	298 x 141	3.9
S 8x2	2	240 x 120	298 x 271	6.1

Material: Primed Mild Steel

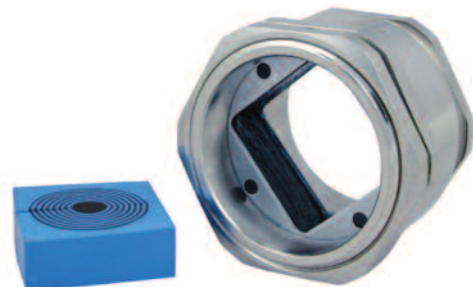


S 6x1

Roxtec RG M63 Seal

The Roxtec RG M63 entry seal is a cable gland type of seal with adaptable sealing modules at the centre. It is attached by a counter ring nut. For use with one to nine cables and allows use of pre-terminated cables.

Part Number	Number of Cables / Pipes	Dimensions (mm)	Weight
RG M63/1	1	74 x 51	0.5
RG M63/4	4	74 x 51	0.5
RG M63/9	9	74 x 51	0.5
RG M Tools		n/a	



RG M63/1



RG M Tools

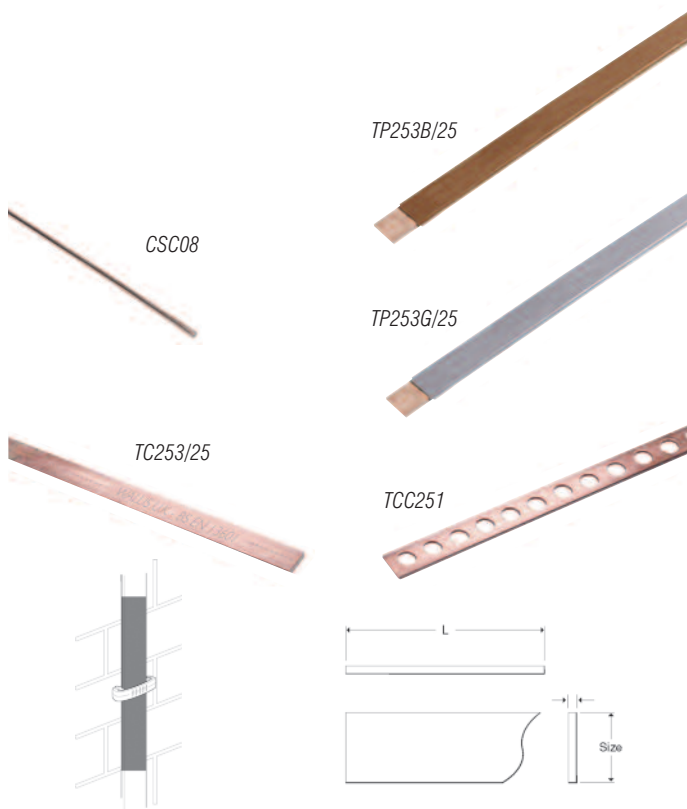
GCA Ltd are an official distributor for Roxtec UK Ltd and currently supply the full range. Please contact head office for any items you require that are not listed in this catalogue.

Conductors - Copper

This copper tape is used on both lightning protection and earthing applications. The copper is manufactured to BS1432 C101/C103. It is annealed for ease of use with radiused edges and marked. The KA rating is based on recommendations of BS7430 with an initial temperature of 30°C and a maximum temperature of 250°C. The PVC covering is 1mm thick PVC, colours to BS5252. Colours listed are held ex stock. Other colours available on request.

Part Number	Product	Dim (mm)	Coil Size (mtr)
TC253/25	Bare tape	25 x 3	25
TP253G/25	Grey PVC covered tape	25 x 3	25
TP253B/25	Brown PVC covered tape	25 x 3	25
CSC08	Solid circular bare conductor	8	50
TCC251	Perforated Copper	25 x 1.5	100

Material: Copper - BS1432 C101/C103

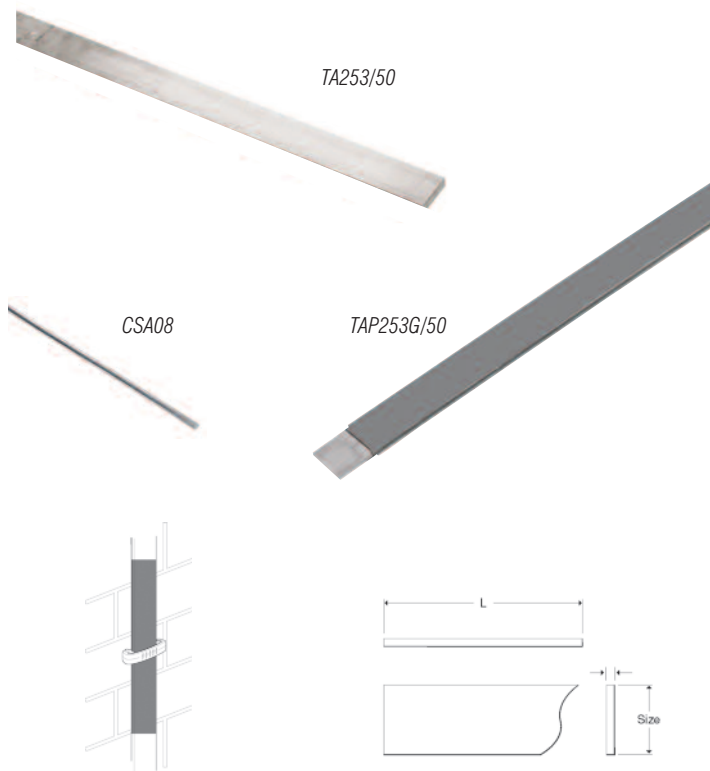


Conductors - Aluminium

This bare and PVC aluminium tape is also used for lightning protection. It is manufactured in accordance with BS2898-1350. The aluminium tape is annealed for ease of use with radiated edges.

Part Number	Product	Dim (mm)	Coil Size (mtr)
TA253/50	Bare tape	25 x 3	50
TAP253G/50	Grey PVC covered tape	25 x 3	50
CSA08	Solid circular bare conductor	8	50

Material: Aluminium BS2898-1350

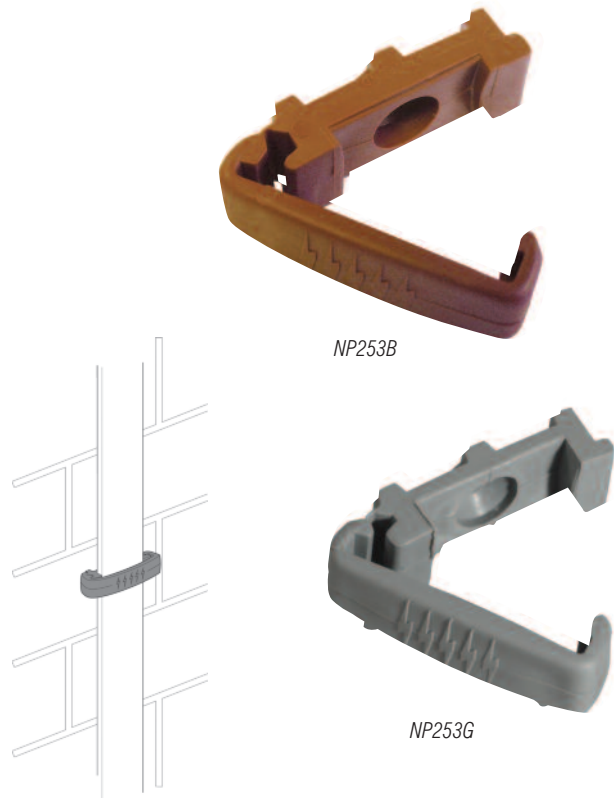
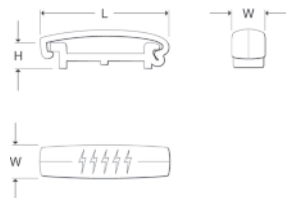


Non Metallic DC Clips

This one piece clip with its integral hinged lid means there are no lost or dropped lids. The clips are available to suit both plain and pvc covered tape in a variety of sizes. These clips are manufactured in high grade polypropylene and UV stabilised to prevent degradation or breaking in cold weather. Available in a wide range of colours, please call for details.

Part Number	Tape Size	Tape Type	Colour	Weight	Pack Qty
NM253B	25 x 3	Bare	Brown	0.07	50
NM253G	25 x 3	Bare	Grey	0.07	50
NP253B	25 x 3	PVC Covered	Brown	0.07	50
NP253G	25 x 3	PVC Covered	Grey	0.07	50

Material: Polypropylene

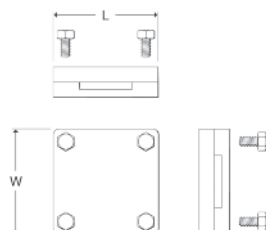


Square Junction Clamps

These four way connectors are suitable for crossing over tapes, making straight through joints or T connections in a continuous network of tapes. The base has a countersunk hole in the middle for securing the clamp in place, the lid is secured by four screws. The screws are also countersunk.

Part Number	Tape Size (mm)	Tape Type	Weight (kgs)	Pack Qty
JG253	25 x 3	Copper	0.07	25
JA253	25 x 3	Aluminium	0.15	25

Material: Gun Metal & Aluminium





Earth Rod & Accessories

Deep driven threaded copperbond earth rods are an economical method of achieving a low earth resistance. The rods have a low carbon steel core, ideal for deep driving and a molecularly bonded copper covering of 99.9% to give lasting resistance to corrosion. Couplings are used to join lengths of threaded copperbond earth rods together and are used with driving heads for driving earth rod by hand or with a power hammer. The rod to tape and cable clamps are used for joining the earth rod to various sizes of copper or aluminium tape.

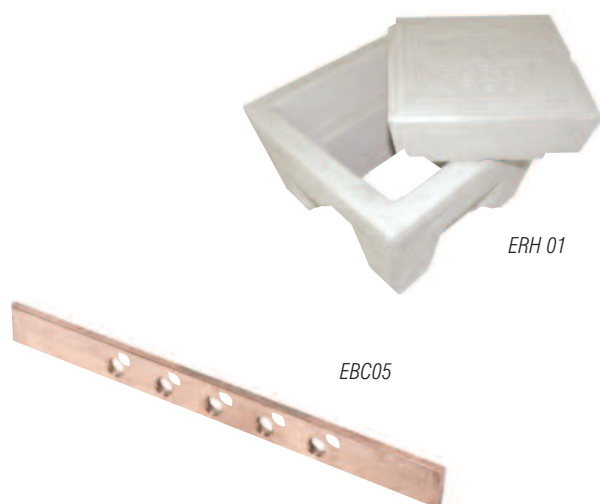
Part Number	Description	Thread / Rod Size	Tape Size	Material	Length	Diameter	Weight
ERB112	Earth Rod	5/8"	n/a	Copper bonded to Steel	1200	14.2	1.53
ERBO16	Coupling	5/8"	n/a	Aluminium Bronze	69	21	0.08
ERBD16	Driving Head	5/8"	n/a	Steel	54	22	0.08
ERA1625	Rod to tape A Clamp	5/8"	25x3	Gun Metal	51	36	0.15
ERA 1670	Rod to Cable Clamp	5/8"	16-70mm ²	Gun Metal	41	21	0.08
ERU 216	Rod to Tape U-Bolt	5/8"	25x3	Gun Metal	61	32	0.24



ERB112

Earth Housings - Heavy Duty

The plastic earth housing will withstand loads up to 6000kg and is suitable for most commercial and industrial applications. The concrete pit is also used for inspection and the earth rod connection. The pit can have an earth bar fitted diagonally across in slots provided for multiple connections.



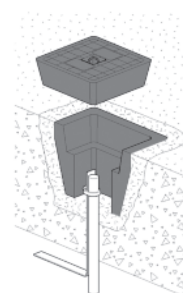
ERH 01

EBC05

Part Number	Material	Length	Height	Width	Weight	Pack Qty
EPP 001	Polypropylene	309	216	258	3	1
ERH 01	Concrete	310	190	320	33	1
EBC05	Copper	300	6	31	0.49	1



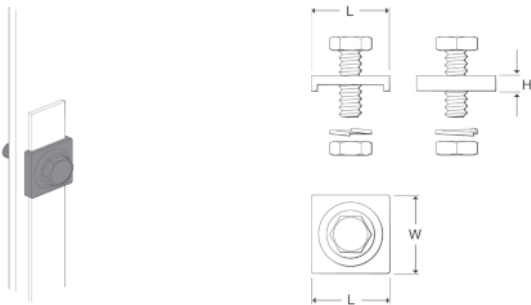
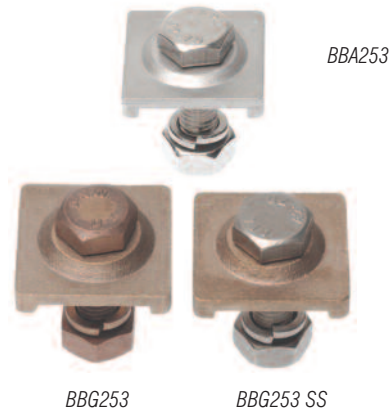
EPP 001



B Bonds

These bonds are used for bonding copper or aluminium tapes to flat metal surfaces.

Part Number	Tape Type	Length (mm)	Width (mm)	Bolt Material	Pack Qty
BBA253	25 x 3 Aluminium	35	10	Stainless Steel	10
BBG253	25 x 3 Copper	35	10	Phosphor Bronze	10
BBG253 SS	25 x 3 Copper	35	10	Stainless Steel	10
ACS050	8mm Aluminium	60	16	Aluminium	10

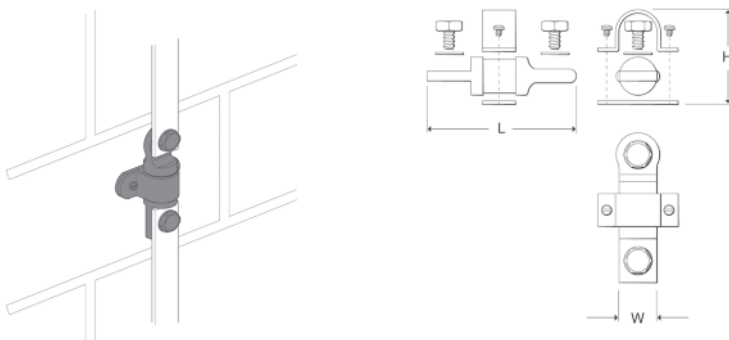
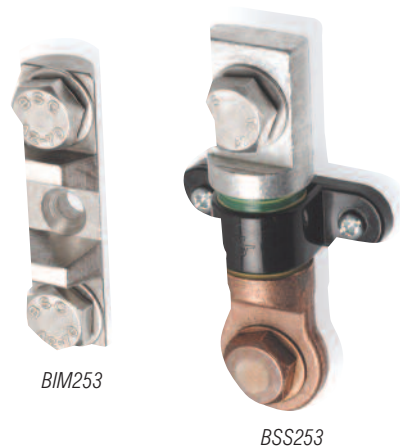


Bi Metallic Connectors

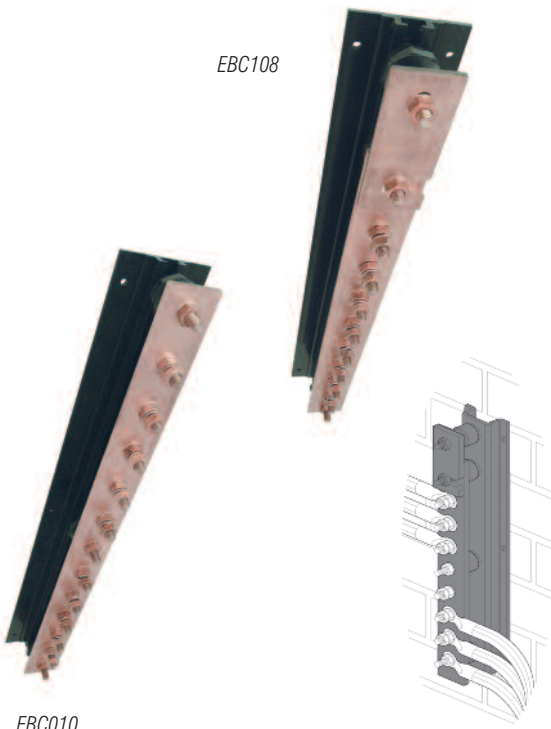
The fittings are used to connect aluminium tape to copper tape. They are a neat and practical jointing method without the need for tinning, riveting or wrapping the joint. It is recommended to use an oxide inhibiting compound with this connector (on page 23). The unit is fixed to the wall and the conductors then fixed to the connector.

Part Number	Tape Size	Length (mm)	Width (mm)	Height (mm)	Bolt
BIM253	25 x 3	98	29	25	M10 x 25
BSS253	25 x 3	76	21	20	M10 x 10

Materials: Aluminium & Copper or Stainless Steel



EBC108



EBC010

Earth Bars

Earth bars come in a variety of sizes and specification depending on individual requirements. They are used as a point for earthing connections on the side of cabinets or walls.

Part Number	No. of Terminations	No. of Links	Length (mm)	Width (mm)	Height (mm)
EBC004	4	0	350	97	70
EBC104	4	1	475	97	70
EBC006	6	0	450	97	70
EBC106	6	1	575	97	70
EBC008	8	0	550	97	70
EBC108	8	1	675	97	70
EBC010	10	0	650	97	70
EBC110	10	1	775	97	70
EBC012	12	0	750	97	70
EBC112	12	1	875	97	70
EBC014	14	0	850	97	70
EBC114	14	1	975	97	70

Hard Drawn Copper Bar: Grade C101 BS1432

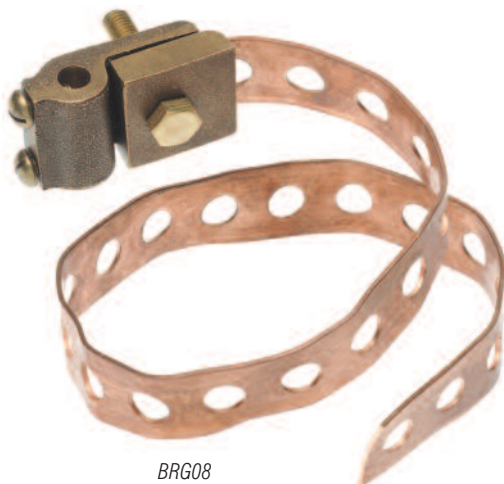
Fitting: Brass, phosphor bronze or Stainless Steel

Channel Base: Mild Steel Zinc plated or black polypropylene

Insulators: Reinforced polyester

Rainwater Pipe Bonds

The pipe bond can be used on any applications where the tape can be wrapped around circular objects such as pipes or rails. The perforated tail pipe bond is used with 8mm conductor.



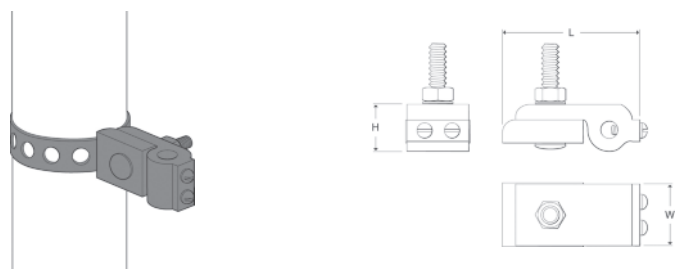
BRG08

Part Number	Conductor Size (mm)	Tape Type	Length (mm)	Width (mm)	Height (mm)	Bolt Size (mm)	Pack Qty
BRG08	8	Copper	55	32	17	M8 x 40	5
BRA08	8	Aluminum	51	31	16	M10 x 35	5

Body: Gunmetal or Aluminium

Bolt: Stainless Steel

Perforated Tail: Aluminium or Copper

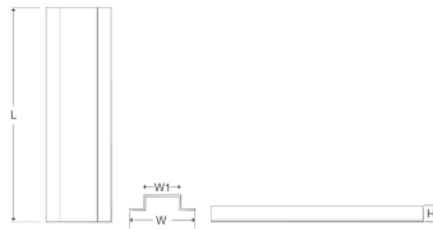


Earth Paste and Anti Vandal Guards

Electrical joint compound, also known as oxide inhibiting compound, recommended for use on aluminium to aluminium and aluminium to copper connections, on all bare conductors and bus bars. This assures a high conductivity joint by sealing out air and moisture to prevent corrosion and reformation of oxide film. This anti vandal guard shields 8mm or 25x3 copper down conductor and protects from accidental damage or vandals. Easy to secure the guard has a low profile and the galvanised finish gives a long lasting resistance to corrosion.

Part Number	Size	Container	Fitting
IC08	8 oz	Tube	n/a
AVG	2m long	n/a	25x3

AVG Material: Mild Steel Galvanised



IC08

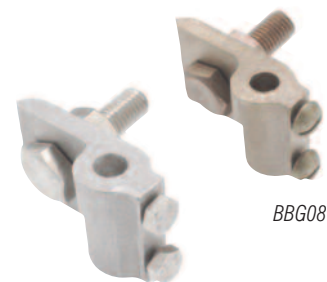
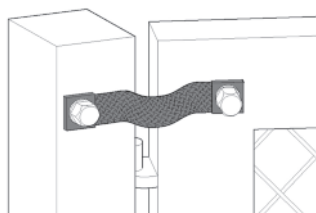


AVG

Circular B Bonds and Flexible Braid Bonds

This bond is used for bonding copper or aluminium 8mm conductor to flat metal surfaces. This braid is used for bonding two metal surfaces.

Part Number	Tape Size	Length (mm)	Width (mm)	Bolt Material	Pack Qty
BBA08	8mm Aluminium	52	33	Stainless Steel	10
BBG08	8mm Copper	52	33	Phosphor Bronze	10
BFE200	n/a	200	25 x 3.5	Copper - BS4109	10
BFE300	n/a	300	26 x 3.5	Copper - BS4110	10
BFE400	n/a	400	27 x 3.5	Copper - BS4111	10



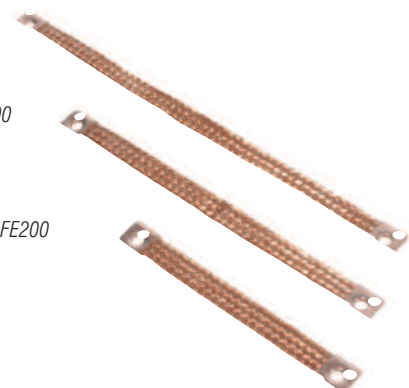
BBG08

BBA08

BFE400

BFE300

BFE200



Earth Lugs & Straps

Compression lugs or earth lugs are manufactured from high conductive pure electrolytic copper and tin plated to provide excellent corrosive resistance. Tenby and Niglon earth straps are long enough to earth the majority of pole sizes, and designed for external use.



DX16/10



TENBY

Part Number	Cable Size (mm)	Studding Size (mm)	Pack Qty
DX6/6 or 8*	6	6 or 8	100
DX10/6, 8, 10	10	6, 8, 10	100
DX16/6, 8, 10, 12	16	6, 8, 10, 12	100
DX25/6, 8, 10, 12	25	6, 8, 10, 12	100
DX50/8 or 10	50	8 or 10	100
DX70/8, 10, 12	70	8, 10, 12	30
TENBY EC15/6	n/a	555mm Long	50
NIGLON AEC 2/18	n/a	465mm Long	50

* **Ordering example:** DX6/6 - 6mm cable size and 6mm stud

Green Yellow Earth Cable & Cable Cutters

Stranded copper conductor to BS6491x, and cable cutters.



GYEarth 16



PCC38

Part Number	Conductor Size (mm)	Drum Size
GYEarth 2.5	2.5	100
GYEarth 4	4	100
GYEarth 6	6	100
GYEarth 10	10	50
GYEarth 16	16	50/100
GYEarth 25	25	50
GYEarth 50	50	50
GYEarth 70	70	50
PCC38	Up to 38mm ²	n/a
PCC80	Up to 80mm ²	n/a

Pre-Insulated Crimp Terminals

A complete range of pre-insulated terminals that combine high quality with competitive pricing. High grade PVC insulation makes crimping easy whilst ensuring complete integrity of termination.

Part Number	Terminal Type	Colour	Cable Size (mm)	Size (mm)	Pack Qty
RF50/08/VR	Female Push On	Red	0.5 - 1.5	5	100
RF66/08/VR	Female Push On	Red	0.5 - 1.5	6.6	100
BF50/08/VR	Female Push On	Blue	1.5 - 2.5	5	100
BF66/08/VR	Female Push On	Blue	1.5 - 2.5	6.6	100
YF66/08/VR	Female Push On	Yellow	4-6	6.3	100
RS64	Fork	Red	0.5 - 1.5	6.4	100
BS64	Fork	Blue	1.5 - 2.5	6.4	100
YS64	Fork	Yellow	4 - 6	6.4	100
RM50/VR	Male tab	Red	0.5 - 1.5	4.8	100
RM63/VR	Male tab	Red	0.5 - 1.5	6.3	100
BM50/VR	Male tab	Blue	1.5 - 2.5	4.8	100
BM63/VR	Male tab	Blue	1.5 - 2.5	6.3	100
RR64	Ring	Red	0.5 - 1.5	6.4	100
BR43	Ring	Blue	1.5 - 2.5	4.3	100
BR64	Ring	Blue	1.5 - 2.5	6.4	100
YR43	Ring	Yellow	4 - 6	4.3	100
YR64	Ring	Yellow	4 - 6	6.4	100
YR105	Ring	Yellow	4 - 6	10.5	100



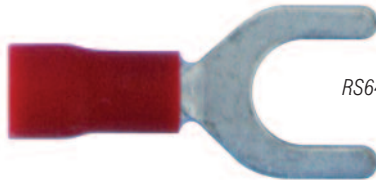
BF50/08/VR



YR64



RM63/VR



RS64

VR: indicates 'Vibration Resistant'
Extra copper ring within the crimp terminal.

Red Insulation:
Conductor size 0.5-1.5mm² / 22-16awg.

Blue Insulation:
Conductor size 1.5-2.5mm² / 16-14awg.

Yellow Insulation:
Conductor size 4.0-6.0mm² / 12-10awg.

UL approval number: E163810

Heat Shrink Tubing & Crimp Tools

High quality 2:1 standard wall heat shrink tubing.

Material: Flame retardant crosslinked Polyolefin. UL approved.

Working temperature: -55°C to +125°C.

Voltage: 600V.

Part Number	Colour / Type	Width (mm)	Shrink Ratio	Box Quantity (mtr)
HSMB32BL*	Blue	3.2	2:1	15
HSMB32GR	Grey	3.2	2:1	15
CT15	Crimping tool for Red, Blue & Yellow Pre-Insulated Terminals			
CT1.5-16	Crimping tool for 1.5 - 16mm ² Copper Tube Terminals			
CT50	Crimping tool for 6-50mm ² Copper Tube Terminals			
CT150	Crimping tool for 25 - 150mm ² Copper Tube Terminals			

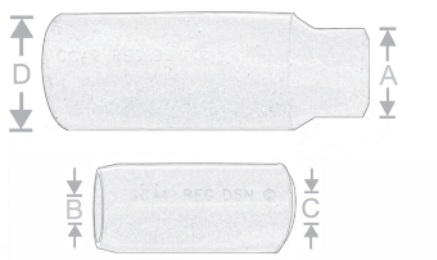
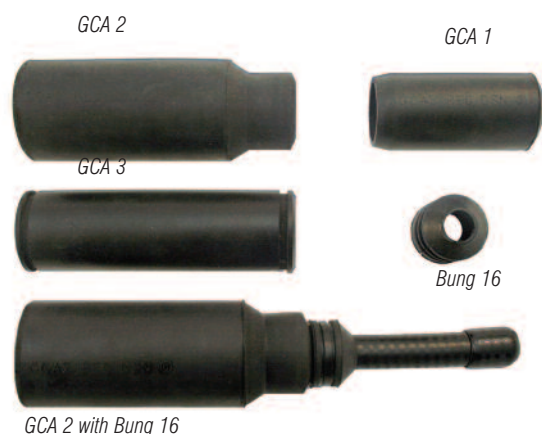
* Other Colours Available



HSMB32BL*

HSMB32GR





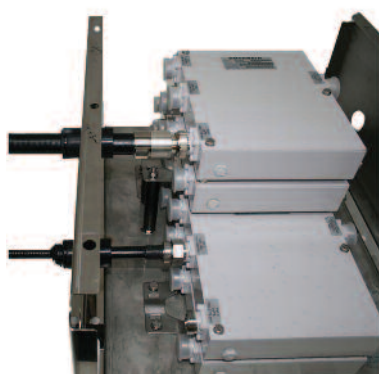
GCA Weatherproof Covers

GCA 1 and GCA 2 connector covers are used to protect downward facing 7/16" DIN connectors on antenna systems, Diplexers and MHA's. GCA 3 connector covers are used to protect horizontal 7/16" DIN connectors, and can also be used as an alternative to GCA 2's in vertical situations with the addition of a cable tie (HFC 140) at the top of the cover.

Material - EPDM

Where upward facing 7/16" DIN connectors on top of such items require protecting from water ingress then a GCA2 and relevant bung is used. The bungs are available to suit the 1/2" feeder (16mm diameter), 1/2" Jumper (14mm diameter) and 3/8" jumper (10.5mm diameter).

Part Number	Cable Size	Length (mm)	Internal Dia B	Internal Dia C	Outside Dia D	Outside Dia A	Material Thickness (mm)	Pack Qty
GCA 1	1/2" - LCF12-50, AVA4-50	75	26	26	37	NIL	5	25
GCA 2	7/8" - LCF78-50, AVA5-50	126	26	34	48	37	5	10
GCA 3	7/8" Feeder Connectors	126	26	34	38	NIL	5	10
BUNG 16	1/2" Feeder	35	16	Nil	30	NIL	8	25
BUNG 14	1/2" Jumper	35	14	Nil	30	NIL	8	25
BUNG 10.5	3/8" Jumper	35	10.5	Nil	30	NIL	8	25



TRIBOX



DIBOX

Outdoor Combiner Box

There are two versions of the combiner box, one houses up to three Kathrein Diplexers, and the other houses up to three Kathrein Triplexers. Whilst they have the same holding down arrangement, they are not interchangeable as the Kathrein combiners are different sizes and have different connector layouts. Feeder terminations are weatherproofed using half GCA3's supplied with the box. Where a 1/2" jumper is deployed then a 16mm bung should be used. If superflexible jumpers are being used the rigging contractor will need to supply the relevant 14mm bungs. Where 7/8" feeder is deployed, no bung is required. A separate delivery charge is applicable to these items.

Part Number	A	B	C
DIBOX	600	500	160
TRIBOX	600	500	275

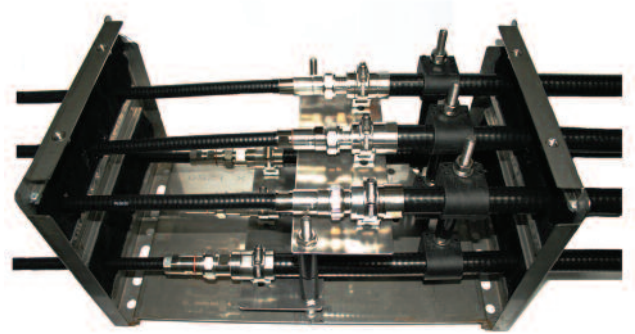
Material - Stainless Steel

Outdoor Termination (ASTP) Box

Outdoor feeder termination box is designed to terminate feeder externally to the radio equipment enclosure. It can be used for a number of different reasons/solutions such as where:

- a) The main feeder is too large to be taken directly into the equipment enclosure.
- b) The main feeder needs to be installed and tested prior to outdoor equipment being deployed.

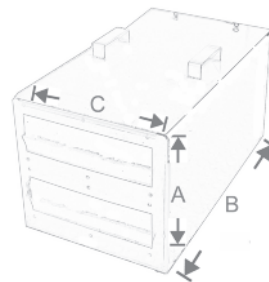
ASTP boxes can be mounted horizontally or vertically in a variety of ways. All base fixing holes are 13mm, suitable for 12mm threaded bolts. The box is designed to mount to standard unistrut type channel or ladder, cable ladder, cable tray, gantry poles or similar. A separate delivery charge is applicable to these items.



6 WAY(3+3) ASTP (ILC)

Part Number	A	B	C
6 WAY(3+3) ASTP (ILC)	290	500	292

Material - Stainless Steel

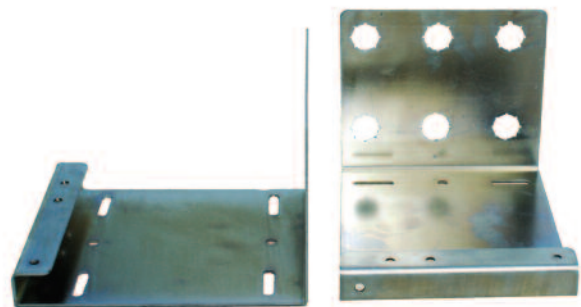


Internal Termination Plate

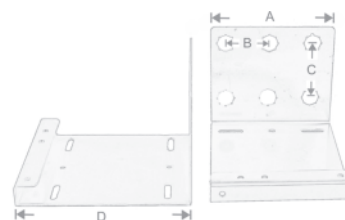
Termination plates are used when there is a requirement to terminate main feeders (e.g. within bespoke rooms) or to upgrade older cabins where insufficient capacity exists in the existing ASTP. Jumper leads are used to make onward connections to RF equipment. Termination plates are generally fixed to Unistrut or cable tray and a variety of holes are provided in the base to enable this to be carried out. A separate delivery charge is applicable to these items.

Part Number	A	B	C	D
6(3+3)WAY PLATE	250	88	120	300

Material - Zinc plated Mild Steel



6(3+3)WAY PLATE



VET Cable Termination Box & VET Clamps

A VET cable termination box is used to terminate antenna control cables. The box has 3 ports and comes complete with a full installation kit.



VET BOX



Part Number	A	B	C	Pack Qty
VET BOX	180	110	87	1
BW00-7.5mm	Single Clamp for VET Cable			50
2P-DW007.5mm	Double Clamp for VET Cable			25

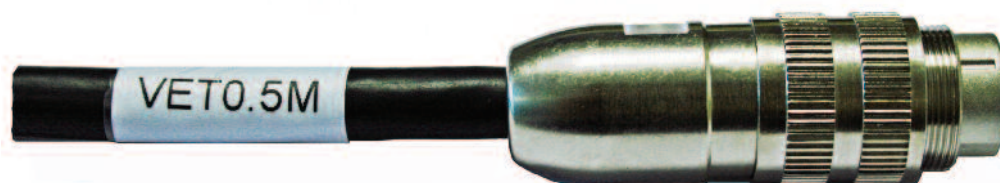


VET Control Cables

VET Control Cables are used to connect the antenna to the controller at the bottom of the site. They use an 8 pin AISG connector as standard. Cables are available in a range of various sizes and are supplied with a grommet on the male end of lengths over 10m.



VET CABLE



Part Number	Length (m)
VET0.5M	0.5
VET1M	1
VET2M	2
VET3M	3
VET5M	5
VET7M	7
VET10M	10
VET15M	15
VET20M	20
VET25M	25
VET30M	30
VET35M	35
VET40M	40
VET45M	45
VET50M	50
VET60M	60
VET70M	70
VET80M	80
VET90M	90
VET100M	100

All sizes above are standard and held ex stock. Any special requirements can be made on request but are subject to a short lead time.

Cable Markers

Oval combination markers are, used for cable and wire marking, electrical, pneumatic, and hydraulic applications. The POK10 marker is used in conjunction with the POH carrier strips, and the MHO markers with the AT carrier strips, enabling any size of cable or pipe to be marked. The specially designed oval profile eases installation and means the marker maintains its position when fitted. Designed to interlock - enabling easy alignment of multiple character markings.

Part Number	Colour	Numbers (0-9)	Letters (A-Z)	Symbols (/ - +)	Pack Qty
POK10YW	Black on Yellow	Yes	Yes	Yes	500
POK10RD	Black on Red	Yes	Yes	Yes	500
POK10WE	Black on White	Yes	Yes	Yes	500
MHO85YW	Black on Yellow	Yes	Yes	Yes	100
MHO85WE	Black on White	Yes	Yes	Yes	100



POK VARIOUS

Cable Marker Carriers

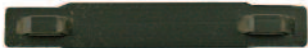
These Flat, wear resistant holders have two raised anchor points for quick and easy threading of cable ties (See page 31). Designed for multi character marking using POK10 or MHO85 markers respectively as detailed below. Raised arms hold marker sleeves in place. Low total marking costs.

Part Number	Markers	Number of Digits	Pack Qty
POH7	POK	7	100
POH12	POK	12	100
POH18	POK	18	100
AT2	MHO	8	100
AT3	MHO	14	100

Colour: Black
Material: Polypropylene



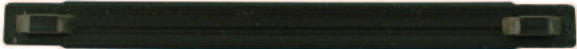
POH7



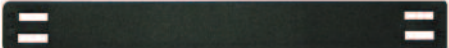
POH12



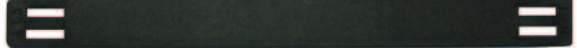
POH18



AT2



AT3



Tiptags

A Tiptag is a marking tag for large diameter cables, looms, conduits, pipes etc and is attached by cable ties. These tiptags have been used on Telephone masts for nearly 10 years and have a very high level of UV resistance. These are printed to meet the needs of each customer.

Other references and tag sizes are available to order.

Part Number	Colour	Length (mm)	Width (mm)	Reel Qty
TIPTAG WE	Black on White	65	11	190
TIPTAG GN	Black on Green	65	11	190
TIPTAG BE	Black on Blue	65	11	190
TIPTAG RD	Black on Red	65	11	190
TIPTAG YW	Black on Yellow	65	11	190
TIPTAG WE100	Black on White	100	11	120
TIPTAG BE100	Black on Blue	100	11	120
TIPTAG YW100	Black on Yellow	100	11	120

Material: LFH grade polyolefin compound.



TIPTAG'S VARIOUS



PT2460

GCA

Brother P-Touch Tapes and Printer

Brother tapes are gloss laminated labels supplied for use in P-Touch label machines. Unlike ordinary labels, Brother's unique label technology ensures that a layer of super-clear polyethylene laminate protects the text. The durability of these labels has been tested to the extreme, against the effects of abrasion, temperature, chemicals and sunlight.

The hand-held **P-touch PT-2460 Label Printer** from Brother is a portable, easy to handle labelling machine. It produces durable cable markings, barcode labels, pricing labels and sales messages simply, quickly and efficiently.



TZ621

TZ231

Part Number	Colour	Width (mm)	Length (mm)
TZ621	Black on Yellow	9	8
TZ631	Black on Yellow	12	8
TZ641	Black on Yellow	18	8
TZ221	Black on White	9	8
TZ231	Black on White	12	8
TZ241	Black on White	18	8
PT2460	P-Touch Labelling Machine		

Cable Ties

Our cable ties are a one-piece moulded nylon 6.6 non-releasable cable tie. They have a bent finger grip and low threading force for quick installation along with smooth rounded edges.

Part Number	Length (mm)	Width (mm)	Pack Qty
HFC100	100	2.5	100
HFC120	120	4.8	100
HFC140	140	3.6	100
HFC150H	150	7.6	100
HFC200	200	4.8	100
HFC200I	200	3.6	100
HFC200L	200	2.5	100
HFC200H	200	7.6	100
HFC240H	240	7.6	100
HFC300	300	4.8	100
HFC300L	300	3.6	100
HFC300H	300	7.6	100
T370*	370	3.6	100
HFC370H	370	7.6	100
HFC430H	430	9	100
T450	450	7.6	100
T450N	450	7.6	100
HFC530H	530	9	100

Flame Resistance: In accordance with UL94V2

Strength: Tensile strength MIL 23190 E

Temperature Range: For continuous use -40°C to +85°C

UL: Approved



Colour: Black or Natural (add N i.e. HFC100N)

Material: Nylon 6.6

*Only available in Black

Marker Ties

Marker Ties provide a quick and effective method of securing and marking bundles of cables. Also used for component marking and pipe identification. Markings can be made with the a Permanent Marker Pen.

Part Number	Colour	Length (mm)	Width (mm)	Marking Area	Pack Qty
MAR 100F	Natural	100	2.5	25x8	100
MAR 200W	Natural	200	4.6	28x13	100
MAR PEN	Permanent Marker Pen				

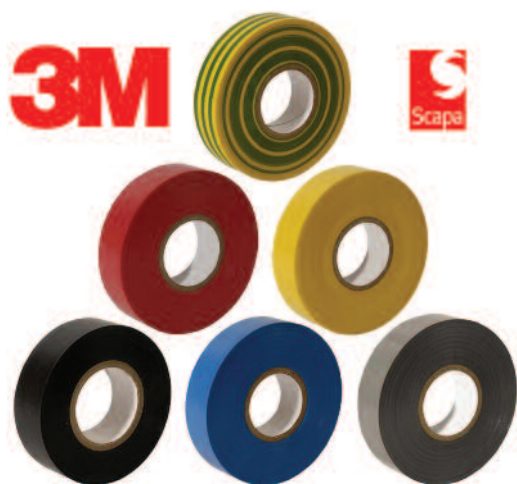


Colour: Black or Natural (add N i.e. HFC100N)

Material: Black Nylon 6.6

PVC and Self Amalgamating Tape

3M™ scotch 780 pvc tapes are hard wearing electrical lead free self-extinguishing tapes. Scapa 2702 is an electrical lead free self-extinguishing plasticised PVC tape, 0.13mm thick, suitable for primary electrical insulation where a recognised specification EC. or international standard is required and where environmental safety is a concern. Scapa 2501 is used for moisture protection and electrical insulation in multiple applications. Available to purchase as individual rolls.



PVC TAPES



2501 PIB 19

Part Number	Colour	Length (mm)	Width (mm)	Box Qty
PVC Tapes				
3MSCOTCH 19	Black	20	19	100
3MSCOTCH GY	Grey	20	19	100
3MSCOTCH 50	Black	6	50	100
3MTEMFLEXGY	Green/Yellow	25	19	100
2702 PVC 19BK	Black	33	19	48
2702 PVC 19RD	Red	33	19	48
2702 PVC 19YW	Yellow	33	19	48
2701 PVC 19GY	Grey	33	19	48
2702 PVC 19BLUE	Blue	33	19	48
2702 PVC 19GRN/YEL	Green/Yellow	33	19	48
2702 PVC 38BK	Black	33	38	24
2702 PVC 50BK	Black	33	50	18
2702 PVC 50GY	Grey	33	50	18
Self Amalgamating Tapes				
2501 PIB 19	Black	10	19	48
2501 PIB 25	Black	10	25	36
2501 PIB 38	Black	10	38	24
2501 PIB 50	Black	10	50	18

Brand: 3M & Scapa

Butyl and Denso Tapes

Butyl putty and 3M™ Scotchfil™ Electrical Insulation Putty Tape are both electrical grade, rubber-based, elastic-type putty in tape form. Used it as a build-up compound on highly irregular surfaces, such as fittings and valves, to provide a smooth, waterproof taping surface. Denso tapes are cold applied anti-corrosion and sealing tapes based on a synthetic fabric, impregnated and coated with a neutral Petrolatum compound. Denso is the original cold applied petrolatum based anti-corrosion tape.



DENSO 50



3MSCOTCHFIL

Part Number	Colour	Length (mm)	Width (mm)	Thickness (mm)	Box Qty
BUTYL	Black	600	62	3	100
3MSCOTCHFIL	Black	1500	38	3.2	100
DENSO 50	Black	1000	50	1.5	36

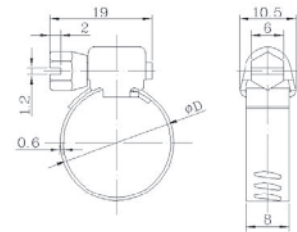
Hose Clips

Hose clips are used on applications that require a high level of torque. Their stainless steel construction means they can withstand outdoor applications. Hose clips can be used with the GCA Ltd Tower leg adaptor - BPA50mm+. Hose clips used with BPA-50mm+ (see page 6) adaptors on tower legs must be larger than the tower leg diameter, to account for the adaptor. See below chart for correct size. Also available to purchase individually.

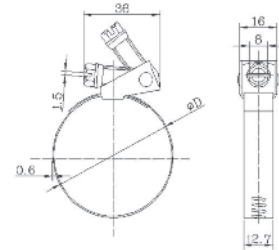
Part Number	Adjustment (mm)	Tower Leg (mm)	Box Qty
1XHOSE	30 - 40	33.7	50
2HOSE	40 - 50	48.3	50
2XHOSE	45 - 60	50.8	50
3HOSE	55 - 70	55	50
3XHOSE	60 - 80	60.3	50
4HOSE	70 - 90	76.1	50
4XHOSE	85 - 100	88.9	50
5HOSE	90 - 120	101.6	50
6HOSE	110 - 140	114	50
6XHOSE	120 - 150	139.7	50
7HOSE	135 - 165	148	50
QRHOSE152	51 - 152	51-152	50



HOSE CLIPS



QRHOSE



Material: Stainless Steel

Stainless Steel Banding, Buckles and Tools

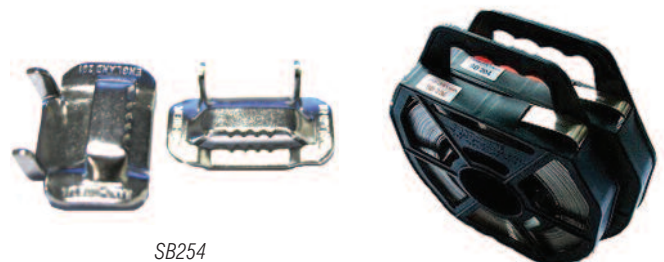
All banding is finished with round edges for safety and product protection. Manufactured in Stainless Steel grade 201 for the best combination of yield and tensile strength, as well as corrosion resistance. Use the band in a double loop for a significant increase in the clamping strength. Both 1/2" & 3/4" fit the GCA Ltd tower leg adaptor - Ref: BPA 50mm+ (see page 6). The SB001 tool is used for both tensioning and cutting the banding.

Part Number	Colour	Width (mm)	Marking Area	Pack Qty
SB204	Banding	1/2" (13mm)	30	1
SB206	Banding	3/4" (19mm)	30	1
SB254	Buckles to suit SB204	1/2" (13mm)	100	100
SB256	Buckles to suit SB206	3/4" (19mm)	100	100
SB001	Tensioning Tool & guillotine to suit items SB204 & SB206	3/4" (19mm)	100	100

Material: Stainless Steel Grade 201



SB001



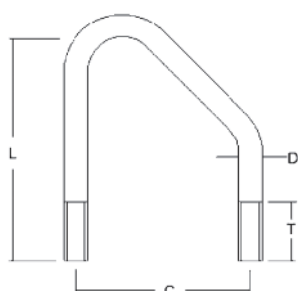
SB254

SB206 / SB204

M12 N-Bolts



2/NB/009



N-Bolts are designed specifically for use in the telecom industry to fit standard angle iron sizes. All N-Bolts are spun galvanised and supplied with 4 full nuts, 2 flat washers & 2 spring washers.

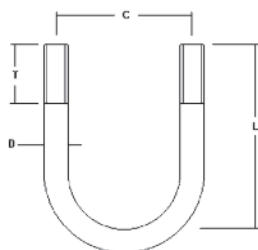
Part Number	Width (mm) C	Length (mm) L	Bolt Width (mm) D	Thread Length (mm) T	Angle Size (mm)	Weight (kg)	Pack Qty	Box Qty
2/NB/006	85	105	12	35	70 x 70	0.304	1	50
2/NB/007	90	110	12	35	75 x 75	0.312	1	50
2/NB/008	95	120	12	40	80 x 80	0.340	1	50
2/NB/009	100	130	12	40	85 x 85	0.340	1	50
2/NB/018	105	140	12	50	90 x 90	0.366	1	50
2/NB/010	115	145	12	40	100 x 100	0.384	1	50
2/NB/011	135	170	12	50	120 x 120	0.435	1	50
2/NB/012	165	200	12	50	150 x 150	0.491	1	50
2/NB/019	130	165	12	50	4 1/2" x 4 1/2"	0.420	1	50
2/NB/020	142	177	12	50	5" x 5"	0.458	1	50

Material: Mild Steel grade 43a to BS4360 - spun galvanised

M12 U-Bolts



UB23



U-Bolts are designed specifically for use in the telecom industry to fit standard tube sizes. All U-Bolts are spun galvanised and supplied with 4 full nuts, 2 flat washers & 2 spring washers.

Part Number	Width (mm) C	Length (mm) L	Bolt Width (mm) D	Thread Length (mm) T	Tube Size (mm)	Weight (kg)	Pack Qty	Box Qty
UB19	48	77	12	45	33.7	0.231	1	50
UB20	57	86	12	45	42.4	0.255	1	50
UB21	63	92	12	45	48.3	0.272	1	50
UB22	75	104	12	45	60.3	0.302	1	50
UB22 LONG	75	160	12	100	60.3	0.378	1	50
UB23	91	120	12	45	76.1	0.339	1	50
UB23LONG	91	176	12	100	76.1	0.423	1	50
UB24	103	132	12	45	88.9	0.360	1	50
UB24 LONG	103	190	12	100	88.9	0.451	1	50
UB25	129	158	12	45	114.3	0.423	1	50
UB25 LONG	129	215	12	100	114.3	0.508	1	50
UB26	154	183	12	45	139.7	0.483	1	50

Material: Mild Steel grade 43a to BS4360 - spun galvanised

Hoisting Grips & D-Shackles

Hoisting Grips are used to distribute the force introduced into a cable when hoisted using a winch which is usually the case when cable size and/or length lead to an overall weight that cannot be operated manually. They consist of a wire mesh and hold the cable by means of friction over their complete length when pulled. These one-loop versions are ideal for permanent, one-time installations where the hoisting grip remains attached to the cable.

Part Number	Material	RFS CELLFLEX Feeder Size	RFS CELLFLEX Feeder Ref	Pack Qty
HOIST1-38C	Galvanised wire mesh	3/8"	LCF38-50	1
HOIST1-12C	Galvanised wire mesh	1/2"	LCF12-50	1
HOIST1-78C	Galvanised wire mesh	7/8"	LCF78-50	1
HOIST1-114C	Galvanised wire mesh	1-1/4"	LCF114-50	1
HOIST1-158C	Galvanised wire mesh	1-5/8"	LCF158-50	1
19SHACKLE	Galvanised Steel	N/A	N/A	1



19SHACKLE



HOIST1-78C

RFS 7-16 DIN Connectors

The 7-16 din connector is the most rugged RF connection meeting all the requirements even under severe environmental conditions. These connectors are perfectly sealed against environmental threats by using specially designed O-rings.

Part Number	RFS CELLFLEX Feeder Size	RFS CELLFLEX Feeder Ref	Description	Pack Qty
716F-LCF12-070	1/2"	LCF12-50	Female RAPID FIT	1
716F-LCF78-072	7/8"	LCF78-50	Female RAPID FIT	1
716F-LCF114-072	1-1/4"	LCF114-50	Female RAPID FIT	1
716F-LCF158-072	1-5/8"	LCF158-50	Female RAPID FIT	1
716M-LCF12-070	1/2"	LCF12-50	Male RAPID FIT	1
716M-LCF78-072	7/8"	LCF78-50	Male RAPID FIT	1
716M-LCF114-072	1-1/4"	LCF114-50	Male RAPID FIT	1
716M-LCF158-072	1-5/8"	LCF158-50	Male RAPID FIT	1



7-16 DIN CONNECTORS



GKSPEED7/8"



KMT11N

Earth Grounding Kits

This RFS grounding kit is made with a braided copper insert to protect the feeder from the damaging effects of lightning currents in excess of 200kA. These coaxial cable earth grounding kits use a single fixing metal bracket and rubber insert for quick installation.

Part Number	Feeder Size	Feeder Reference	Pack Qty
RFS Grounding Kits			
GKSPEED1/2	1/2"	LCF12-50	1
GKSPEED7/8"	7/8"	LCF78-50	1
GKSPEED1-1/4	1-1/4"	LCF114-50	1
GKSPEED1-5/8"	1-5/8"	LCF158-50	1
Coaxial Cable Grounding Kits			
KMT11N	10-11mm Ø	RG8/RG214/CNT400	1
KMT7N	7-8mm Ø	CNT300	1



PNL10



M10/7

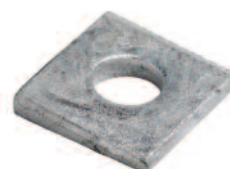
Unistrut Cable Tray Accessories

A small range of Unistrut cable tray accessories used in the telecoms industry are held in stock. GCA Ltd have also developed their own cable tray adaptor.

Part Number	Description	Material	Pack Qty
P1020	UNISTRUT P1063 Hot Dipped Galvanised M10 Plate	Steel - Galvanised	1
PNL8	UNISTRUT PNL8-ZP Spring channel nuts	Steel - Zinc plated	1
PNL10	UNISTRUT PNL10-ZP Spring channel nuts	Steel - Zinc plated	1
UNIPLUGBK	UNISTRUT-PVC end plugs Black 41mm	Plastic	1
UNIPLUGWE	UNISTRUT-PVC end plugs White 41mm	Plastic	1
M10/7	CTA-M10/7 CABLE TRAY ADAPTOR	Plastic with S/S nut	1
M10/11	CTA-M10/11 CABLE TRAY ADAPTOR	Plastic with S/S nut	1



UNIPLUGBK



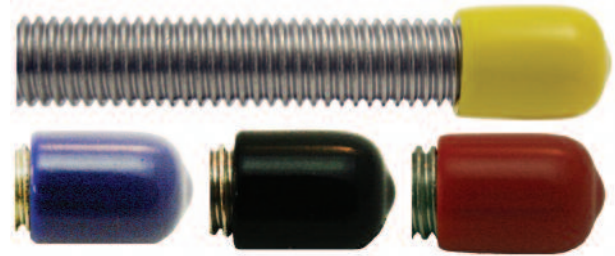
P1020

PVC Stud End Caps

PVC End caps can be used in a multitude of applications but are mainly used in the cellular telecom industry to safely cap the ends of protruding studding up a tower. They are available in a variety of colours and widths.

Part Number	Studding Width (mm)	Thread Width (inches)	Colour	Pack Qty	Box Qty
M8STUDENDYW	8	5/16"	Yellow	100	2500
M10STUDENDYW	10	3/8"	Yellow	100	2500
M10STUDENDBK	10	3/8"	Black	100	2500
M10STUDENDRD	10	3/8"	Red	100	2500
M10STUDENDBE	10	3/8"	Blue	100	2500
M12STUDENDYW	12	7/16"	Yellow	100	2500
M12STUDENDBK	12	7/16"	Black	100	2500
M20STUDENDYW	20	3/4"	Yellow	100	2500

Material: PVC (80 Shore)



M10 STUDEND CAPS

Plastic Wall Plugs & Wood Screws

Wall plugs and wood screws are now stocked for use with our extended range of products. Please see the below items for wood screw sizes:

- P19 - Lightning Protection Clips - No.10 1 1/2"
- P40 - GCA Insert - No.8 Screw - length determined by clamp size

Part Number	Screw Size	Drill Bit Size	Weight per 100 (kg)	Size	Pack Qty
REDWALL	No.6-10	5.5mm	0.15	7mm x 42mm	100
BROWNWALL	No.10-14	7mm	0.15	5.5mm x 34mm	100

Material: Plastic

Part Number	Weight per 100 (kg)	Pack Qty
8 1-1/4"SCREW	0.18	100
8 1-1/2"SCREW	0.18	100
8 1-3/4"SCREW	0.18	100
8 2"SCREW	0.2	100
8 2-1/2"SCREW	0.2	100
8 3"SCREW	0.2	100
10 1-1/4"SCREW	0.25	100
10 1-1/2"SCREW	0.25	100
10 1-3/4"SCREW	0.27	100
10 2"SCREW	0.27	100
Coach 10x75	0.28	100

Material: Bright Zinc Plated Steel



8 1-1/4"SCREW



Coach 10x75



BROWNWALL

REDWALL

Drill Bits

SDS+ "Snap in" drill bits are manufactured to strict quality standards, and can be used in all pneumatic rotary and hammer machines. The heavy impact on the back of the bit and the design of the tungsten tip, create a chiselling effect. Only following pressure is required from the operator. HSS drill bits are made from high grade high speed steel. These drill bits have a ground tip of 118 degrees making them ideal for hand and stationary use. Suitable for drilling steel, cast iron, aluminium, malleable cast iron, brass, copper, wood and plastics.



HSS10



SDS6X160

Part Number	Diameter	Length	Pack Qty
SDS Plus Drills for concrete			
SDS5.5x160	5.5	160	5
SDS6x160	6	160	5
SDS8x160	8	160	5
SDS10x160	10	160	5
SDS12x200	12	200	5

HSS Drills for plastic, wood or metal			
HSS6	6	100	10
HSS8	8	120	10
HSS10	10	135	10
HSS12	12	150	10

Tek Screws & Cutting Discs

Heavy-section hexagonal self-drilling screws are used for fixing steel to steel of 4.0mm to 12.5mm maximum total thickness. They come supplied with a 16mm washer with 3mm thick bonding to reduce the likelihood of leaks. The tek driver is a 5/16" x 1/4" shank drive bar for use with hexagonal head steel to steel 'Tek' screws. GCA Ltd also hold a small range of cutting discs. These flat metal cutting discs are for angle grinders. Type 41 Maximum operating speed 80m/s.



TEKDRIVER



TEK32



DISC115

Part Number	Width (mm)	Length (mm)	Pack Qty
TEK22	5.5	22	100
TEK32	5.5	32	100
TEK38	5.5	38	100
TEK40	5.5	40	100
TEK100	5.5	100	100
TEKDRIVER	5/16"	1/4"	1

Steel Thickness: 4-12.5mm

Part Number	Description	Pack Qty
DISC115	115mm Metal Cutting Disc	1
DISC230	230mm Metal Cutting Disc	1

Foams, Sprays, Paints & Sealants

A range of consumables used everyday on a rigging site are held in stock. Silicone spray is used with GCA Weatherproof covers (see page 26) to ease application.

Part Number	Description	Can Size (ml)	Box Qty
EXFOAM	Ducting Expanding Foam	750	12
EXFOAM FR	Ducting Expanding Foam - Flame Retardant	750	12
FOAM CLEANER	Dual Purpose Foam Cleaner	500	12
SILICON	Silicon Spray (For use with GCA Weatherproof Covers)	500	12
ZINC	High Zinc Spray - Galvanising	400	12
GALV PAINT	Galvafrond - Zinc Rich Galvanising Coating	400	12
115GPMASTIC	General Purpose Building Mastic - Brown, Grey, Stone, White	115ml Tube	12
GPSILICONE	General Purpose Silicone - Clear, White, Black, Brown	310ml Tube	12



FOAMS & SPRAYS



SEALANTS

Gloves & Wipes

Industrial site wipes and gloves are always needed 'on the van'. Everbuild Wonder Wipes, are specially formulated to clean hands, tools and surfaces from wet and semi-cured paint, sealant, adhesive, bitumen, expanding foam, oil, grease and even silicone. These have been very popular proving particularly useful when there is no water on site. Three different types of gloves are held in stock for a range of uses. Gripper gloves have rubber grip on the front with a breathable back, and disposable rubber latex are very useful when spraying expanding foam and other messy products.



GRIPPER GLOVES



RUBBER GLOVES

Part Number	Description	Pack Qty	Box Qty
WIPES100	100 Industrial strength cleaning wipes for hands etc.	1	6
RUBBER GLOVES	Latex Powdered Disposable Gloves	1	6
GRIPPER GLOVES	Gripper Gloves - Green - Large	1	20
GRIPPER GLOVES O	Gripper Gloves - Orange - Extra Large	1	20
RIGGER GLOVES	Standard Quality Light Grey leather	1	20



WIPES100



WS INSERTS

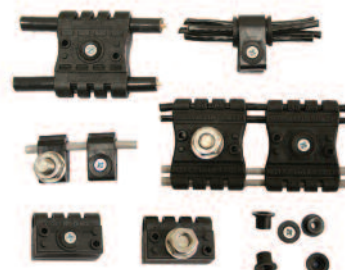
Wood Screw Inserts

This wood screw insert has been designed to fit in the whole range of GCA Ltd clamps and cleats. All clamps in the past have been used with M10 or M8 studding, fixing to a tower leg or similar application. Now, with the addition of the woodscrew insert, these GCA Ltd clamps can be used in a range of applications and fixed to wood, concrete or any other surface with the addition of a No.8 countersunk woodscrew, and a plastic wall plug.

Eg. - 2P-4BW0005.4mm - requires No.8 x 2" woodscrew.

Part Number	Description	Pack Qty
WS INSERTS	Wood Screw Inserts	500

Material: Black polypropylene



T-MOBILE LABELS

RF Antenna Warning Labels

High grade polyester stickers are designed for external use and used mainly for RF Antenna labelling.

Part Number	Description	Pack Qty
VODA LABELS	Vodafone RF Antenna Warning labels	1000
T-MOBILE LABELS	T-MOBILE RF Antenna Warning labels	1000

Label Size: 40 x 40mm

Material: High Performance white polyester with laminated polycarbonate



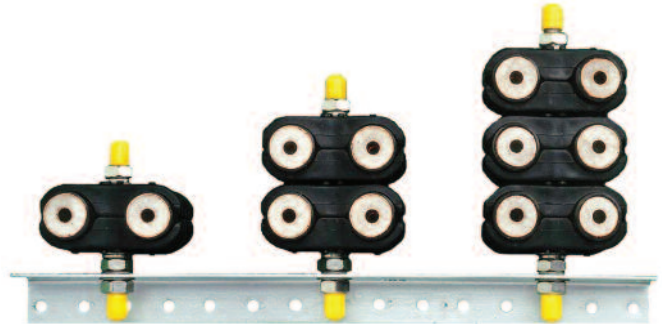
VODA LABELS

Studding Lengths Required For Stacking Clamps

Length of M10 stainless steel threaded studding required for stacking:- single, two or three double or single GCA Ltd clamps, using a maximum 3 x M10 s/s Full Hexagon Nuts, 4 x M10 s/s Form 'B' Flat washers, and 2 x M10 s/s SQ Section Spring Coil Washers. N.B. We have allowed additional 4mm for steel work and approx 15mm maximum - studding protruding after tightening of clamps.

GCA Clamp Part Number	Clamp Stack Height	Studding Size mm	Clamp Stack Height	Studding Size mm	Clamp Stack Height	Studding Size mm
2P-DW0-11mm	1	M10x80	2	M10x100	3	M10x130
2P-DW1-13mm	1	M10x80	2	M10x100	3	M10x130
2P-DW2-1/2"	1	M10x80	2	M10x110	3	M10x130
2P-DW5-7/8" *	1	M10x85	2	M10x130	3	M10x180
2P-DW7-1 1/4"	1	M10x110	2	M10x170	3	M10x250
2P-DW8-1 5/8"	1	M10x130	2	M10x200	3	M10x280

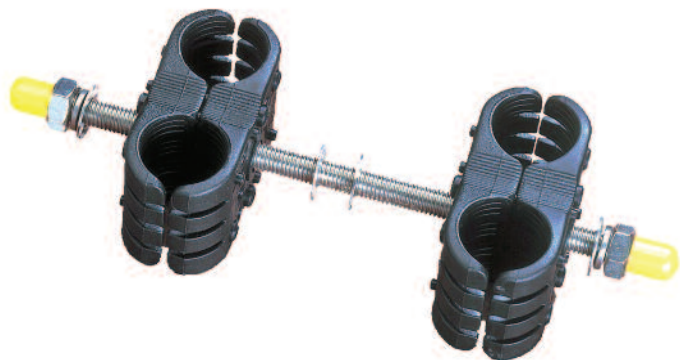
N.B. Studding lengths for single clamps are the same for double clamps e.g. BW5-7/8" triple stack height uses M10x180 which is the same for the 2P-DW5-7/8"



Swivelling Clamps at an Angle

To allow clamps to angle to transmitter place 2 qty - M10 flat washers on studding 'between' back to back of clamps to eliminate interlocking. Swivel clamps to required angle (cable position). Finally tighten M10 hexagonal nut.

All items are covered by copyright laws GCA Ltd patent number 2351117



42

M6CUPWASHER	12	RM120	14	TP253G/25	18	2501PIB19	32
M6FLATS	11	RM15	14	TRIBOX	26	2501PIB25	32
M6NUTS	11	RM15/0	14	TZ221	30	2501PIB38	32
M6PENNY	12	RM15w40	14	TZ231	30	2501PIB50	32
M6SCWASHERS	11	RM20	14	TZ241	30	2702PVC19BK	32
M6SERRATED	12	RM20/0	14	TZ621	30	2702PVC19BLUE	32
M6X100	10	RM20w40	14	TZ631	30	2702PVC19GREY	32
M6X130	10	RM30	14	TZ641	30	2702PVC19GRN/YEL	32
M6X150	10	RM30/0	14	U		2702PVC19RD	32
M6X16SS	10	RM40	14	UB19	34	2702PVC19YW	32
M6X20SS	10	RM40-10-32	14	UB21	34	2702PVC38BK	32
M8FLATS	11	RM40/0	14	UB22	34	2702PVC50BK	32
M8MKD	13	RM5/0X24	14	UB22LONG	34	2702PVC50GY	32
M8NUTS	11	RM50/VR	25	UB23	34	2F-51-57	9
M8PENNY	12	RM60	14	UB23LONG	34	2F-58-64	9
M8SCWASHERS	11	RM60/0	14	UB24	34	2F-65-70	9
M8STUDENDYW	37	RM63/VR	25	UB24LONG	34	2F-71-76	9
M8X100	10	RM90	14	UB25	34	2F-77-83	9
M8X100SS	10	RR64	25	UB25LONG	34	2F-84-90	9
M8X110	10	RS64	25	UB26	34	2F-91-97	9
M8X120	10	RUBBER GLOVES L	39	UNIPLUGBK	36	2F-98-105	9
M8X120SS	10	S		UNIPLUGWE	36	2F-106-112	9
M8X12SS	10	S2X1	17	V		2F-112-120	9
M8X150	10	S2X2	17	VET0.5M	28	2F-121-128	9
M8X150SS	10	S4X1	17	VET100M	28	2F-129-135	9
M8X16SS	10	S4X2	17	VET10M	28	2HOSE	33
M8X200	10	S6X1	17	VET15M	28	2XHOSE	33
M8x30	10	S6X2	17	VET1M	28	3	
M8X300	10	S8X1	17	VET20M	28	3HOSE	33
M8X30SS	10	S8X2	17	VET25M	28	3M35SCOTCHGY	32
M8X40SS	10	SB001	33	VET2M	28	3MSCOTCH19	32
M8X50	10	SB204	33	VET30M	28	3MSCOTCH50	32
M8X50SS	10	SB206	33	VET35M	28	3MSCOTCHFIL	32
M8X80	10	SB254	33	VET3M	28	3XHOSE	33
MAR PEN	31	SB256	33	VET40M	28	4	
MAR100F	31	SDS10X160	38	VET45M	28	4BW0	6
MAR200W	31	SDS12X200	38	VET50M	28	4BW054	6
MHO85WE	29	SDS5.5X160	38	VET5M	28	4HOSE	33
MHO85YW	29	SDS6X160	38	VET60M	28	4XHOSE	33
N		SDS8X160	38	VET70M	28	5	
NIGLON	24	SGPA50	6	VET7M	28	540DHB	7
NM253B	19	SGPA50+6	6	VET80M	28	5HOSE	33
NM253G	19	SGW0	4	VET90M	28	6	
NP253B	19	SGW1	4	VETBOX	28	6HOSE	33
NP253G	19	SGW2	4	VODA LABELS	40	6WAY(3+3)PLATE	27
P		SGW5	4	W		6WAYASTP3+3 ILC	27
P1063	36	SGW7	4	WEDGE 60	14	6WAYASTP3+3	27
PCC38	24	SGW8	4	WEDGE 120	14	6XHOSE	33
PCC80	24	SILICON	39	WEDGE KIT	14	7	
PNL10	36	STAYPLATE120	14	WIPES100	39	716F-LCF114-072	35
PNL8	36	STAYPLATE60	14	WOOD SCREWS	37	716F-LCF12-070	35
POH12	29	STAYPLATE120 AISI 316	14	WS INSERTS	40	716F-LCF158-072	35
POH18	29	STAYPLATE60 AISI 316	14	Y		716F-LCF78-072	35
POH7	29	T		YR105	25	716M-LCF114-072	35
POK10RD	29	T370	31	YR43	25	716M-LCF12-070	35
POK10WE	29	T450	31	YR64	25	716M-LCF158-072	35
POK10YW	29	TA253/50	18	YS64	25	716M-LCF78-072	35
PT2460	30	TAP253G/50	18	Z		7HOSE	33
PVC PIPE CAPS	37	TC253/25	18	ZINC	39		
Q		TCC251	18	1			
QRHOSE152	33	TEK22	38	1070DHB	7		
R		TEK32	38	115GPMASTIC	39		
R100	15	TEK38	38	12WAYASTP	27		
R125	15	TEK40	38	12WAYPLATE	27		
R127	15	TEK100	38	19SHACKLE	35		
R150	15	TEKDRIVER	38	1XHOSE	33		
R200	15	TENBY	24	2			
REDWALL	37	TIPTAGBE	30	2/NB/006	34		
RF50/08/VR	25	TIPTAGBE100	30	2/NB/007	34		
RF66/08/VR	25	TIPTAGGN	30	2/NB/008	34		
RGM63/1	17	TIPTAGRD	30	2/NB/010	34		
RGM63/4	17	TIPTAGWE	30	2/NB/011	34		
RGM63/9	17	TIPTAGWE100	30	2/NB/012	34		
RGM63TOOLS	17	TIPTAGYW	30	2/NB/018	34		
RIGGER GLOVES	39	T-MOBILE LABELS	40	2/NB/019	34		
RM10/0X12	14	TP253B/25	18	2/NB/020	34		

HOW TO ORDER

Sales:

GCA Ltd prides itself on its ability to respond to customer needs. Whether at the design stage of a new clamp, the ordering of existing products or at the point of despatch, our sales office staff will always provide the highest level of service.

For all orders, quotations and technical enquiries please contact:

Tel: +44 (0) 1799 516 016

Fax: +44 (0) 1799 516 598

Email: sales@qcaltd.co.uk

Website: www.gcaltd.co.uk



We offer credit accounts as well as payment by Visa, Mastercard and other major cards.

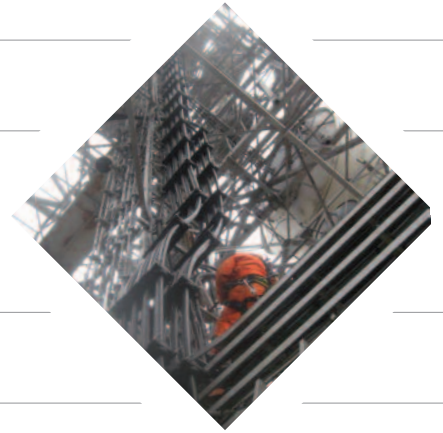
Visit www.gcaltd.co.uk for the all our latest product and technical information.



Delivery Promise

We understand our customers demands and needs, and therefore offer a FREE NEXT DAY delivery service for orders over £100 (any orders under £100 are subject to an admin/carriage charge of £10). GCA Ltd also offer a 'Before 10am' delivery service and other premium delivery services are available on request. We offer a product range covering several hundred items, and our policy is to stock all fast moving items in order to maintain our promise of next day delivery. Please contact our office for a copy of the GCA Ltd terms & conditions of sales.

This catalogue is for guidance only and GCA Ltd makes no warranty in this document as to the fitness for a particular purpose of products. Customers are responsible for deciding the suitability of our products for each application.



Copyright: This brochure is Copyrighted to Graphicshow Cable Accessories (GCA) Ltd. Unauthorised reproduction or storage without permission is an infringement of that Copyright. Infringement of Copyright will result in legal actions. June 2009.

Product Development: It is GCA Ltd's policy to continuously improve its products. Accordingly, GCA Ltd reserves the right to amend product descriptions, specifications and performance without prior notice.

Graphicshow Cable Accessories (GCA) Ltd

Unit 2, Ronell Place
41a Shire Hill Industrial Estate
Saffron Walden
Essex
CB11 3AQ

Tel: 01799 516 016

Fax: 01799 516 598

Email: sales@gcald.co.uk

Website: www.gcald.co.uk